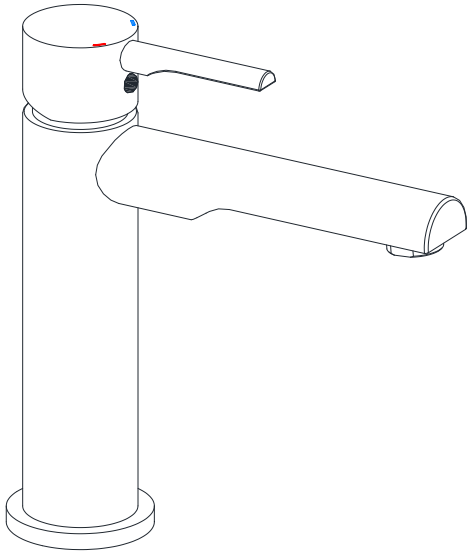


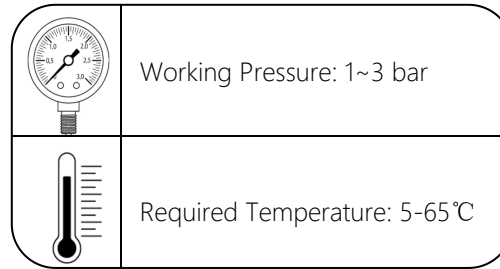


### Single Lever Basin Mixer without Popup Waste System



\* Representative image

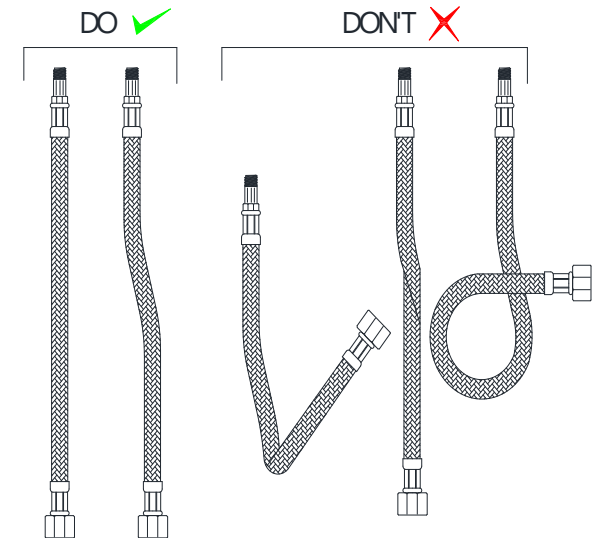
### Temp & water pressure Requirement.



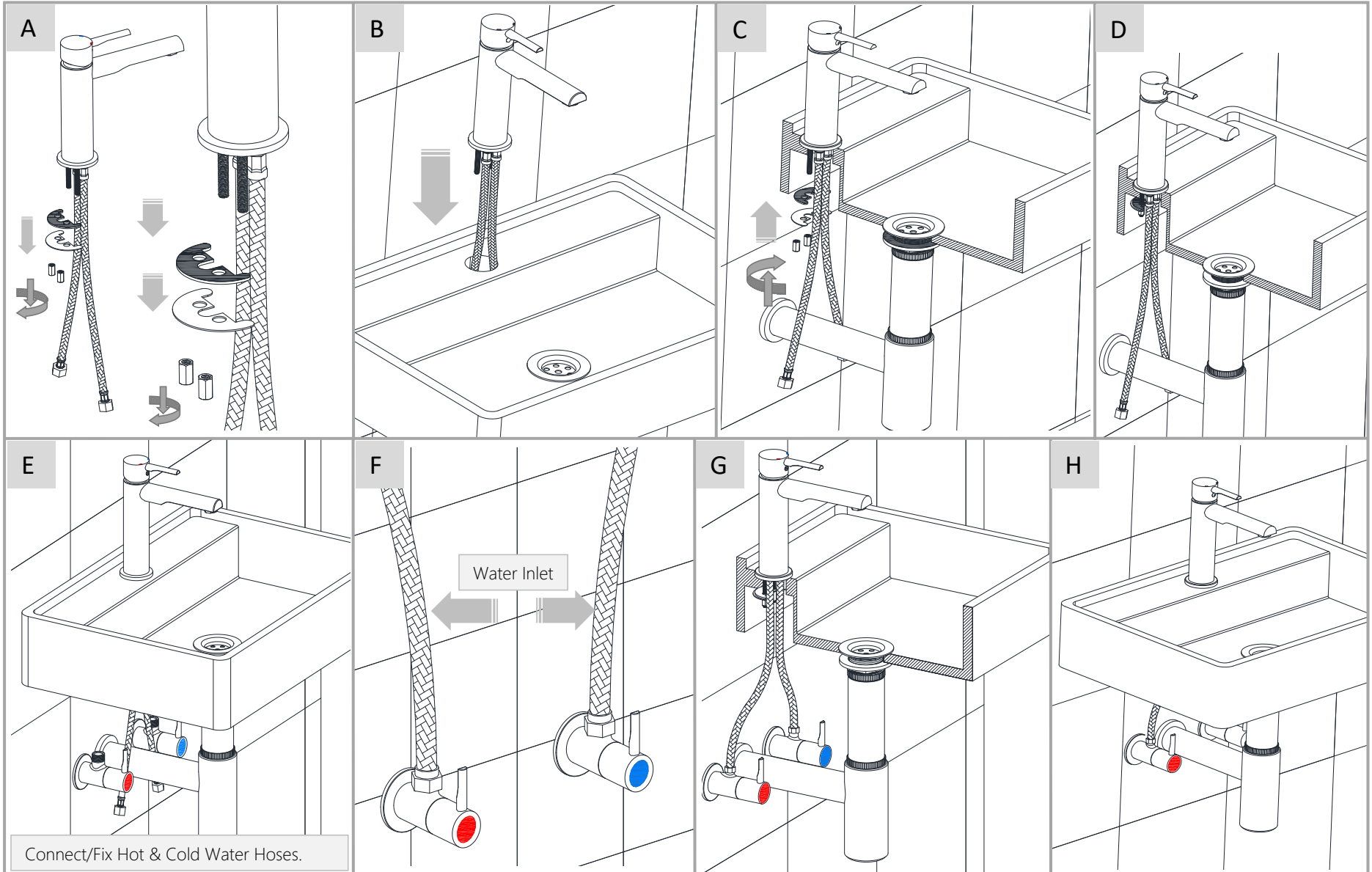
- **Working Pressure:-** The water pressure should be Between 1 and 3 bar for proper functioning.
- **Required Temperature:-** The water temperature within the range of 5-65° for safe & effective use.
- **Note:-** These are recommended values for achieving conventional /Optimum output.

### Guideline for Braided hose Installation

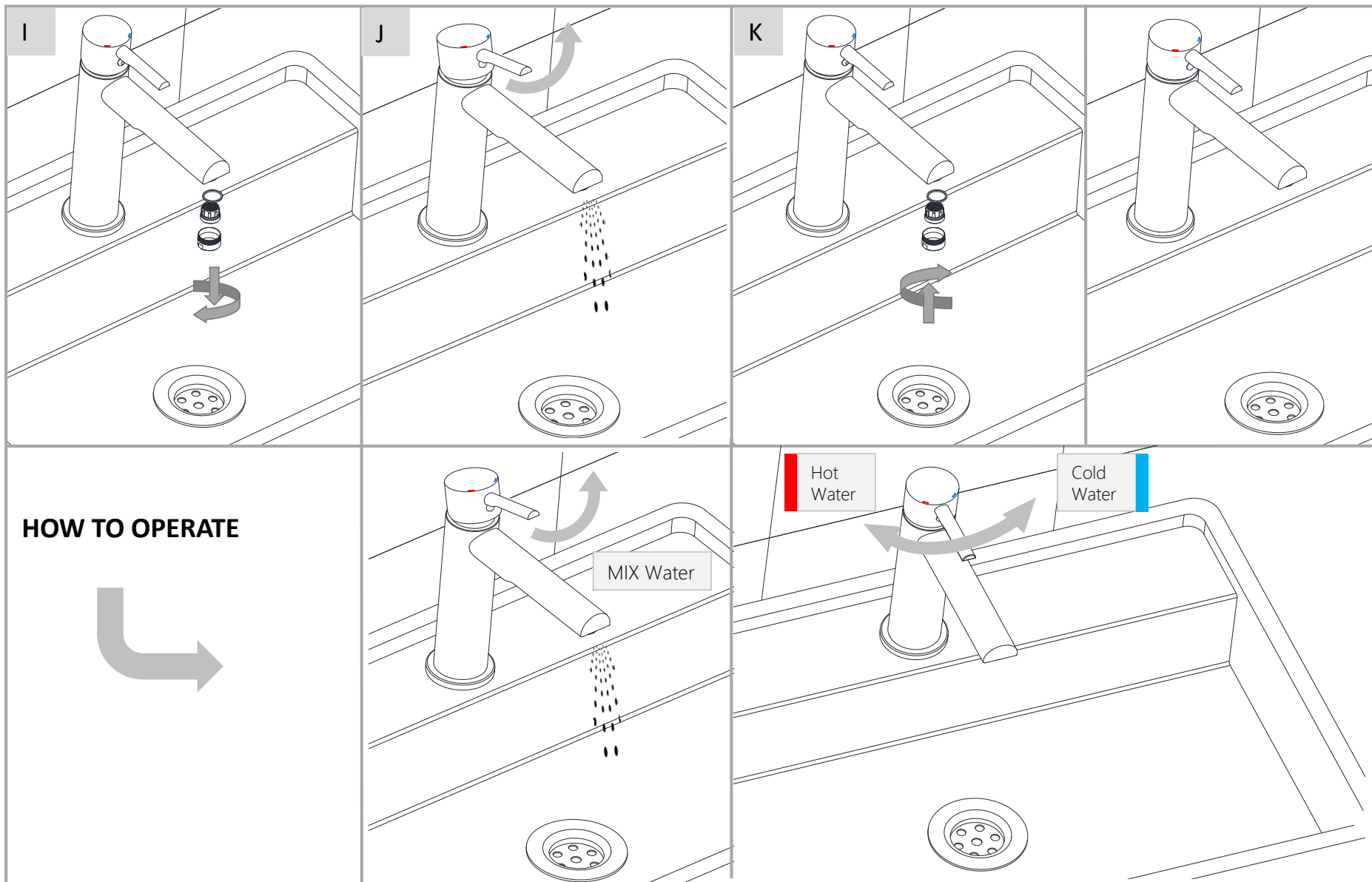
- Keep the hose straight as much as possible.
- Don't twist or bend hose during connection.
- Make sure hose is fully tighten to avoid any leakage.



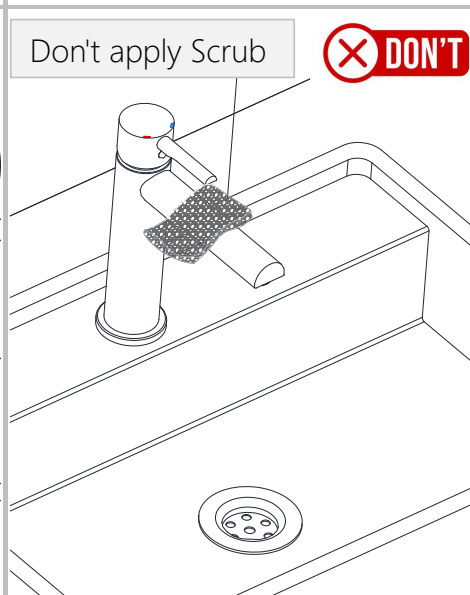
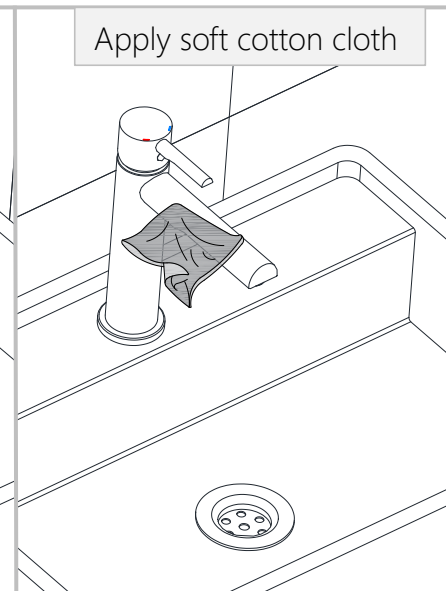
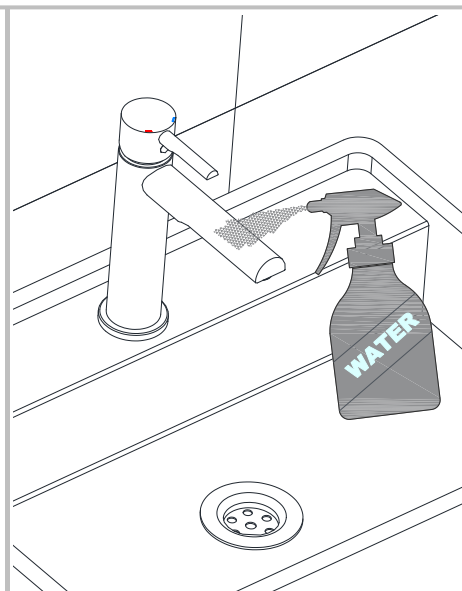
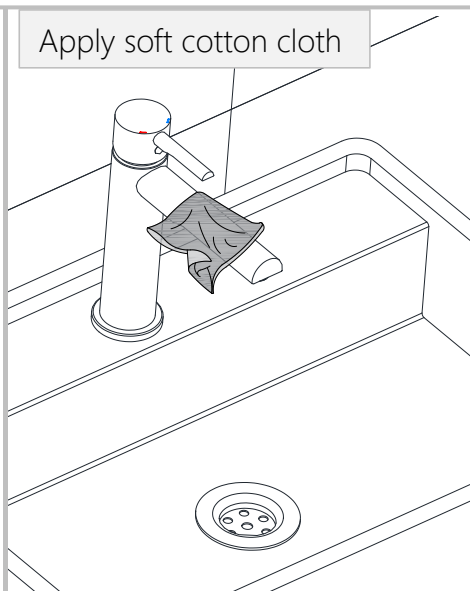
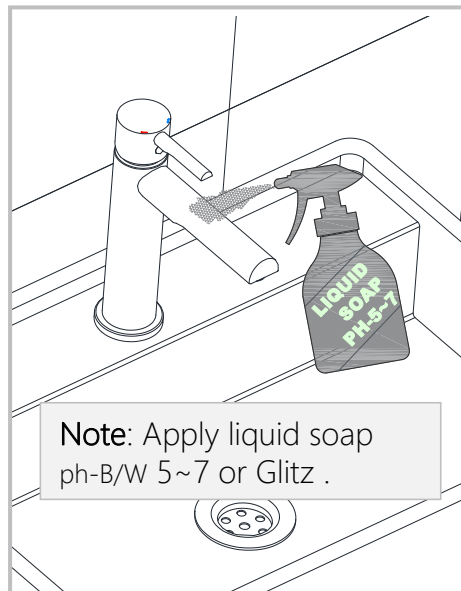
**Note: THIS INSTALLATION MANUAL CAN BE REFERRED FOR ALL SINGLE LEVER BASIN MIXERS WITHOUT POP UP .**



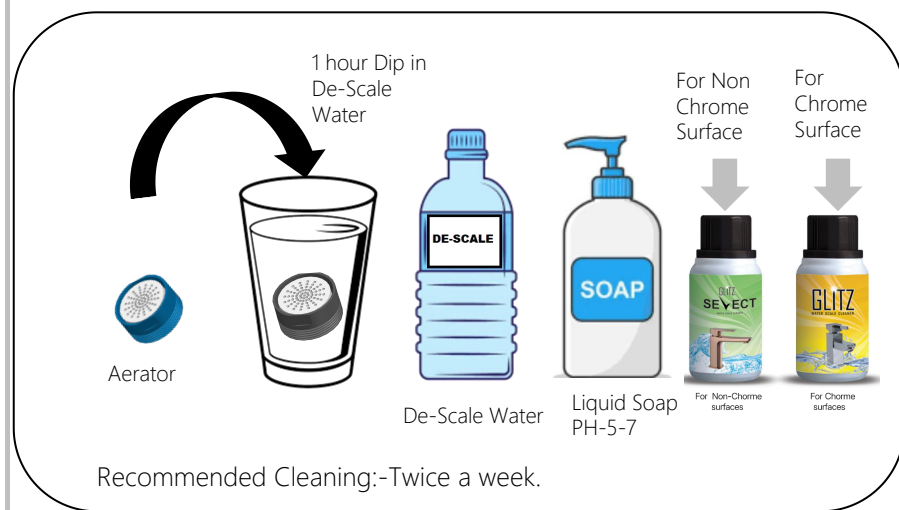
**Note: THIS INSTALLATION MANUAL CAN BE REFERRED FOR ALL SINGLE LEVER BASIN MIXERS WITHOUT POP UP .**



Note: THIS INSTALLATION MANUAL CAN BE REFERRED FOR ALL SINGLE LEVER BASIN MIXERS WITHOUT POP UP .



### Steps & Cleaning agents requirements for Cleaning.



**Note:** THIS INSTALLATION MANUAL CAN BE REFERRED FOR ALL SINGLE LEVER BASIN MIXERS WITHOUT POP UP .