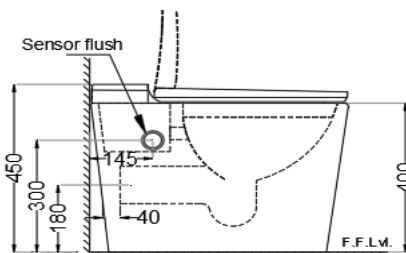
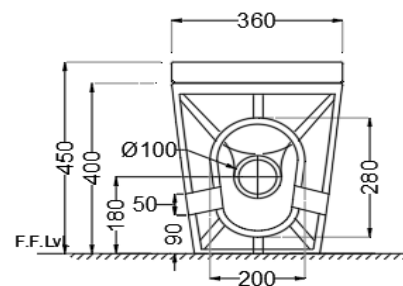


TOP VIEW



SIDE VIEW



BACK VIEW

GENERAL INFORMATION

Product Code	ARS-WHT-39851P180UFSMTL
Brand	Jaquar
Colour	White
Type	Tankless Single Piece WC
Material	Ceramic - Vitreous China

PRODUCT SPECIFICATION

Product Dimension	360x590x450 mm
Basin Inner Dimension	250X340 mm
Product Net Weight	34 kg.
Product Gross Weight	40 kg
Packaging Dimension	630x490x500 mm
Outlet	Horizontal
Waste Hole Dimension	Vertical distance between the Floor and the centre line of the waste outlet hole \leq 180 mm

PRODUCT FEATURES

Product Features	Tankless floor mounted WC with Sensor Based Flushing and Manual flush @ 6.LPF, Jet associated flush, Trap distance-180 mm, Sensor range-180 mm, IP Rating - IP68, UF seat cover and Angle Valve, Anti germ glaze.
------------------	-------------------------------------------------------------------------------------------------------------------------------------------------------------------------------------------------------------------

ACCESSORIES INCLUDED

UF Soft Close Seat cover	ARS-WHT-39107UF
Angle Valve	ZPS-WHT-TL008
Floor Fixing Screw	ZPS-SNS-FB02

CARE AND CLEANING GUIDELINES

- Vitreous china sanitary ware products are fragile in nature and need to be handled with care (to avoid personal injury) at all times during its storage, handling, installation and use thereafter.
- The product is heavy and it is recommended that two persons hold it while it is being fixed.
- Carefully inspect the new product for damage before installation. Recommended to inspect the sanitaryware with wooden Hammer.
- Risk of product damage. Over tightening may cause breakage or chipping of vitreous china. Recommended to use hard rubber & nylon spacer in between ceramic & metal fixtures.
- Risk of external leakage. Do not lift or rock the bowl after placement.
- Always test your cleaning solution on an inconspicuous area on the product before applying it to the entire surface.
- Do not allow cleaners to sit or soak on the product.
- Use a soft, dampened sponge or cloth to clean. Never use abrasive material like a bristle brush or scouring pad.
- Wipe surfaces clean and rinse completely with water immediately after applying cleaners.
- Clean Chrome, stainless steel surfaces once a week. Do not use cleaners containing chloride on chrome, stainless steel. If used, rinse the surface immediately to prevent corrosion.
- Wherever chrome plating is used on the products, use only warm water to clean and then dry with a soft cloth.
- Recommended to use Genuine Accessories.

QUALITY MANAGEMENT SYSTEM - ISO 9001

DISCLAIMER: Our every effort has been made to ensure factual accuracy, the information presented subject to changes due to requirements in different sites, markets and/ or countries. All dimensions are in mm (Tolerance \pm 5 MM). Jaquar reserves the right to make the necessary amendments at any time without prior notice.

For Installation Refer Actual Product.Last modified on 28 May 2025.