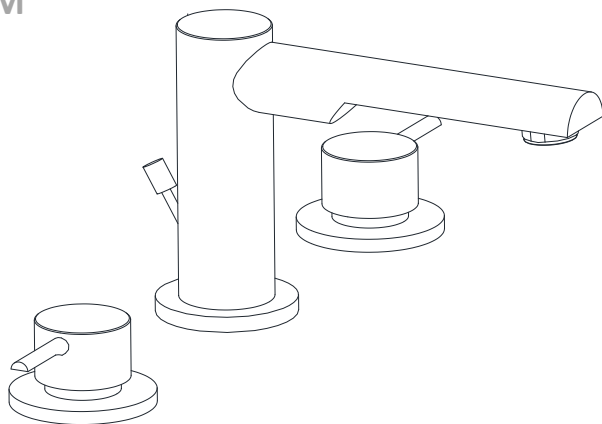
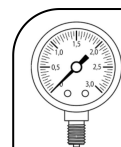




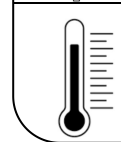
FLP-5191PM



TEMP.& WATER PRESSURE REQUIREMENTS



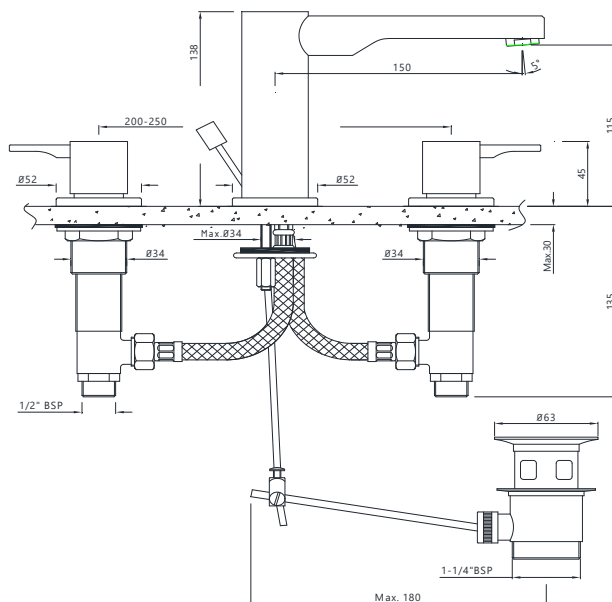
Working Pressure: 1~3 bar



Required Temperature: 5-65°C

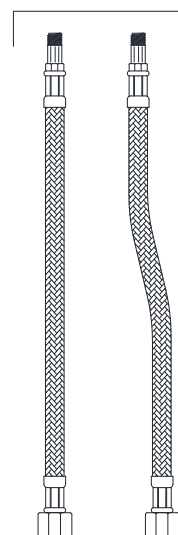
Note: Above values are the recommended values for Getting Conventional Outputs.

TECHNICAL DRAWING

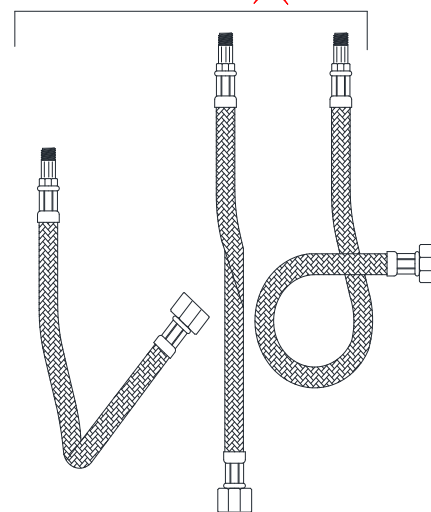


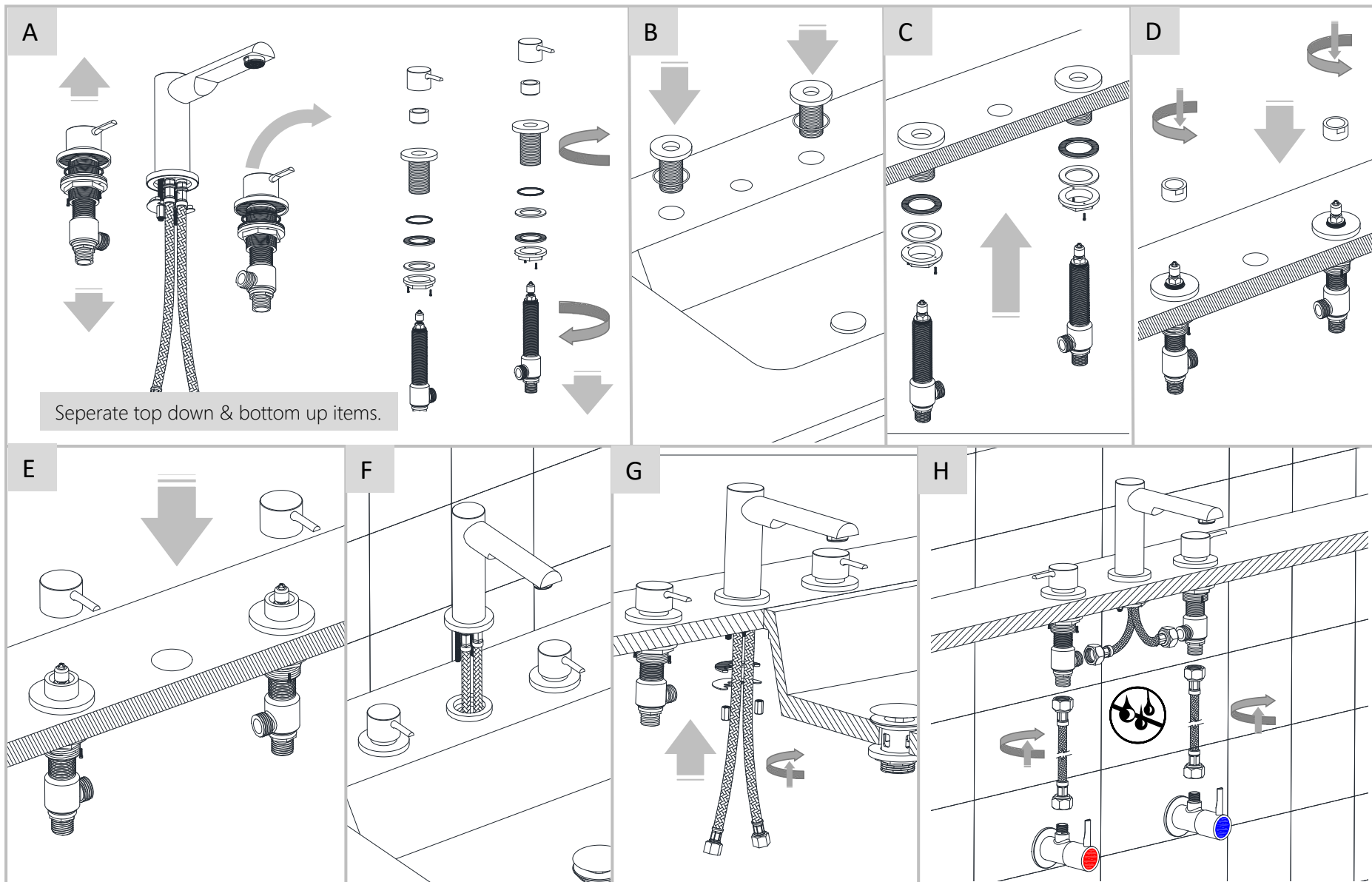
TAKE CARE DURING CONNECTION'S

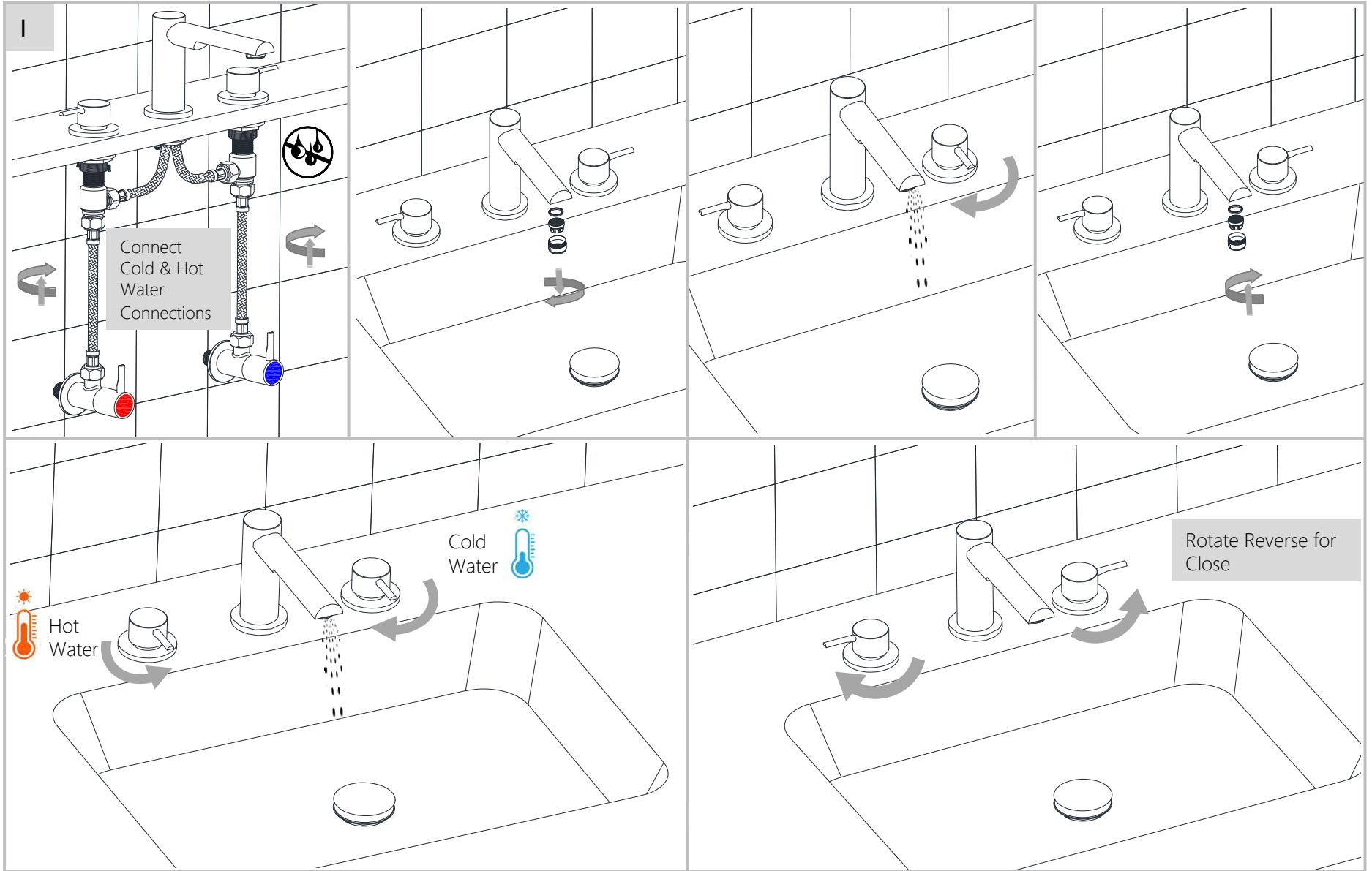
DO 



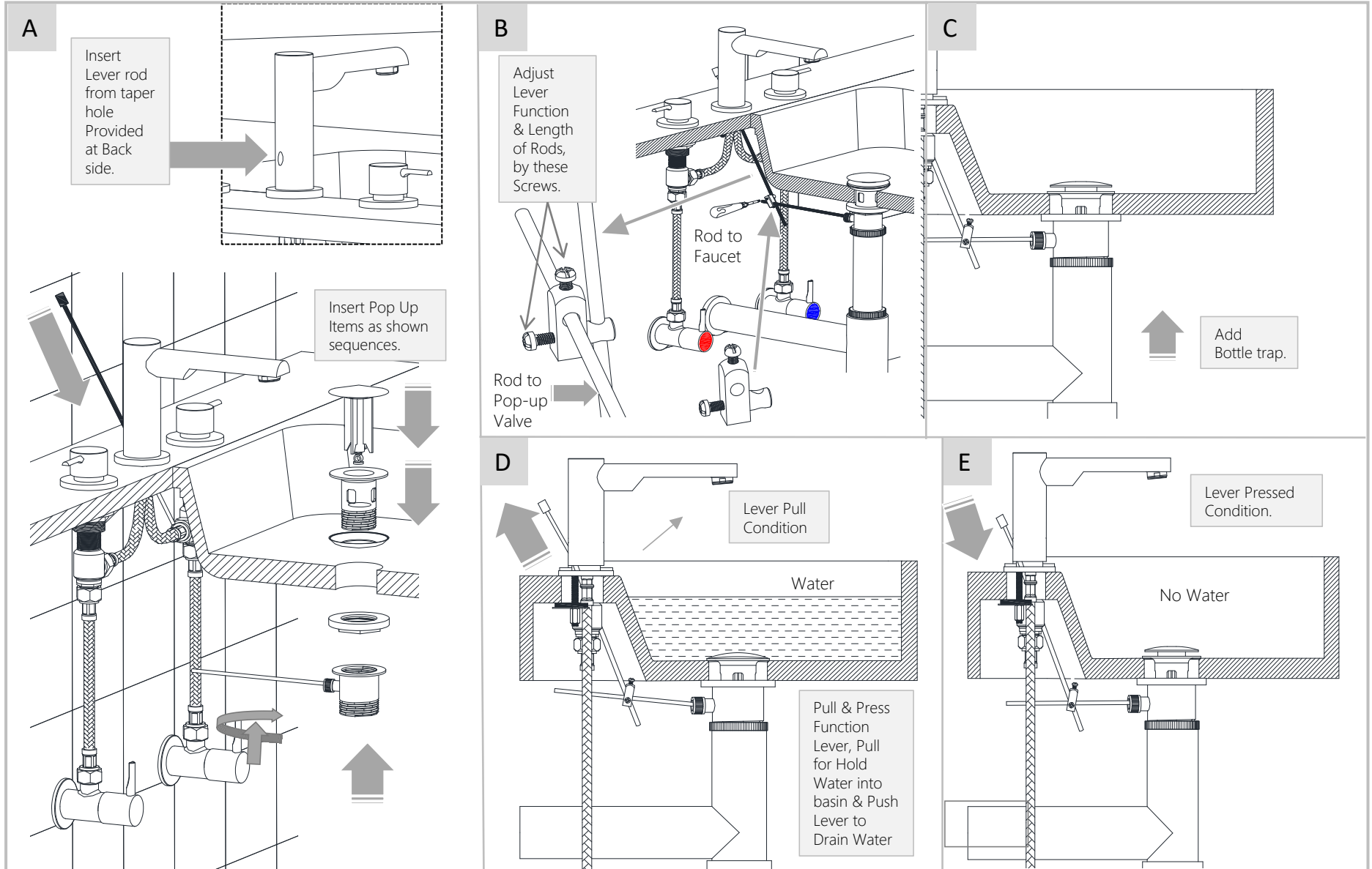
DON'T 







Adding Pop-up Lever



Note: This Installation Method is applicable for Single Lever Basin Mixer with Pop-up Waste.



Apply soft cotton cloth



Apply soft cotton cloth



Don't apply Scrub

Steps & Cleaning agents requirements for Aerator Cleaning.

