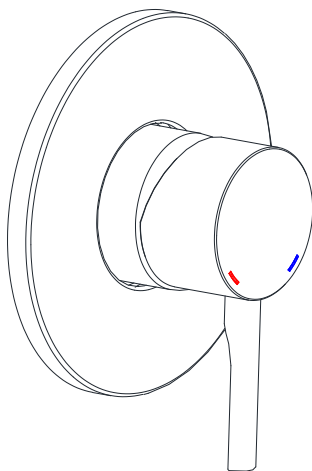
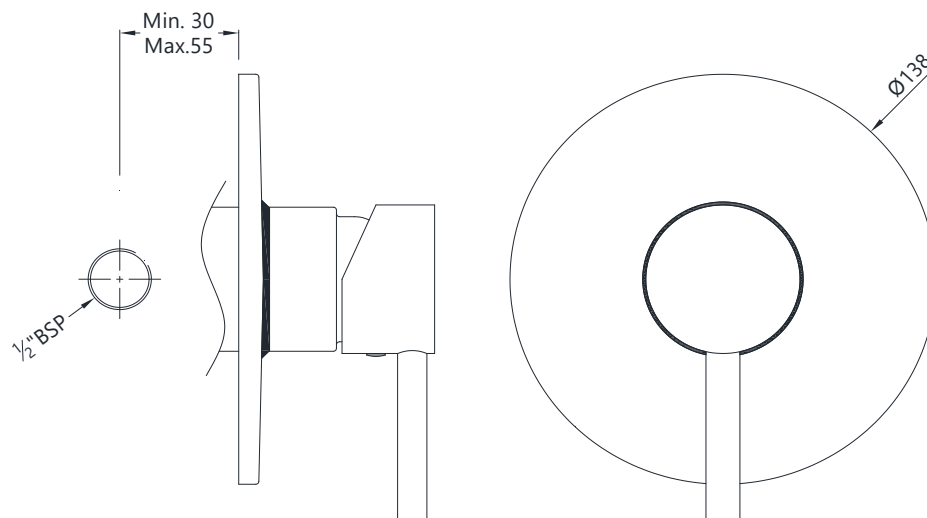




FLP-5139KPM



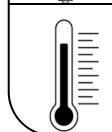
TECHNICAL DRAWING



TEMP.& WATER PRESSURE REQUIREMENTS

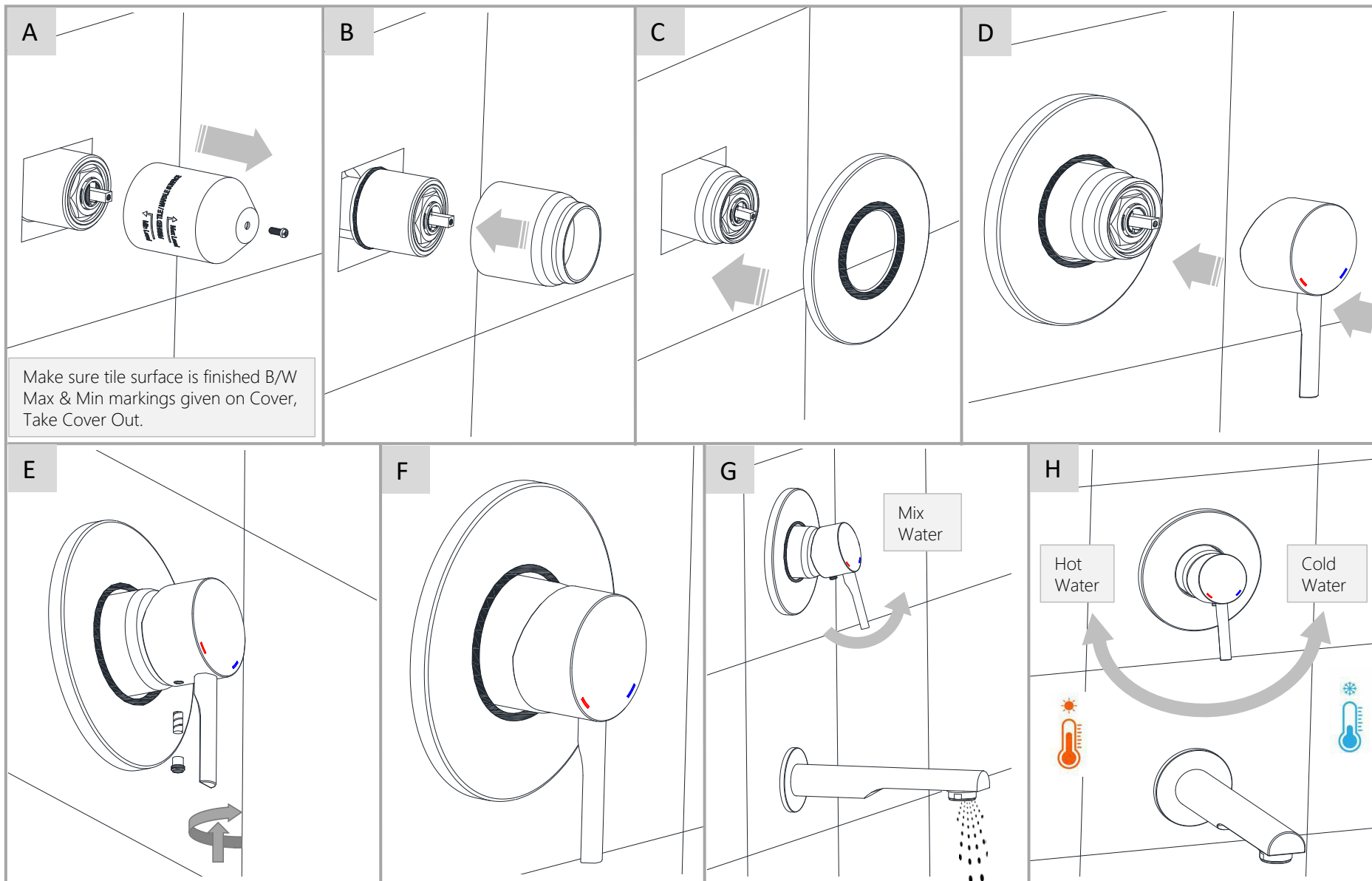


Working Pressure: 1~3 bar



Required Temperature: 5-65°C

Note: Above are the recommended values for getting
Conventional Output.





	<p>Apply soft cotton cloth</p>		<p>Apply soft cotton cloth</p>
<p>❌ DON'T</p>	<p>Don't apply Scrub</p> <p>❌ DON'T</p>	<p><u>Steps & Cleaning agents requirements for Aerator Cleaning.</u></p> <div data-bbox="1114 845 1860 1282"> <p>Aerator 1 hour Dip De-Scale Water Liquid Soap PH-5-7</p> </div>	