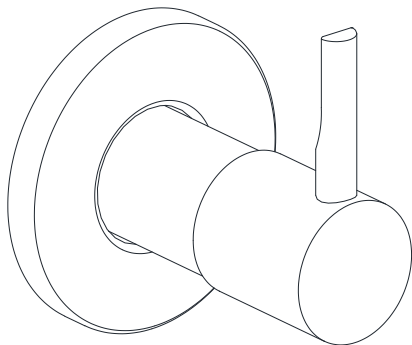
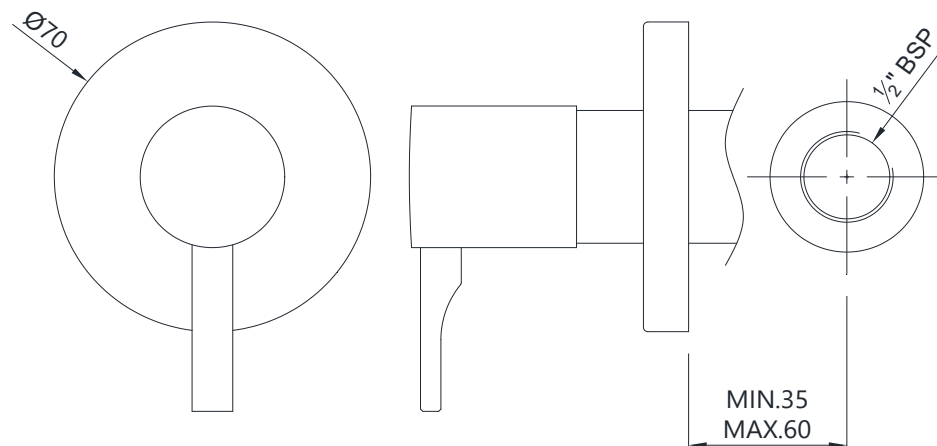




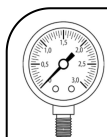
FLP-5083KPM



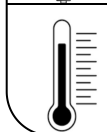
TECHNICAL DRAWING



TEMP.& WATER PRESSURE REQUIREMENTS



Working Pressure: 1~3 bar



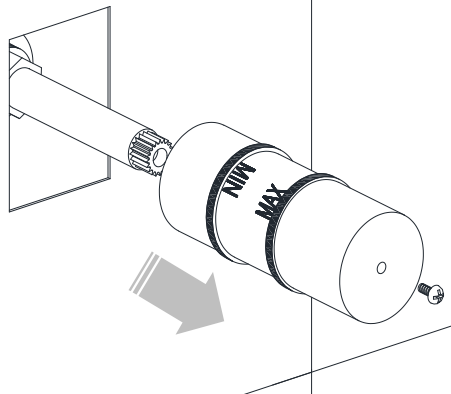
Required Temperature: 5-65°C

Note: Above are the recommended values for getting
Conventional Output.

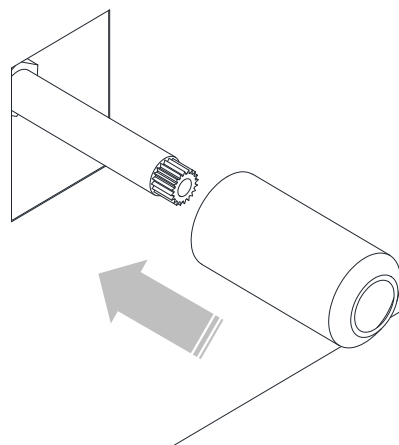


A

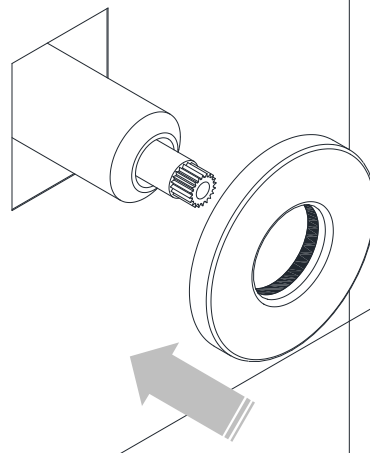
Make sure tile surface is finished
B/W min & max Markings
provided on Cap.



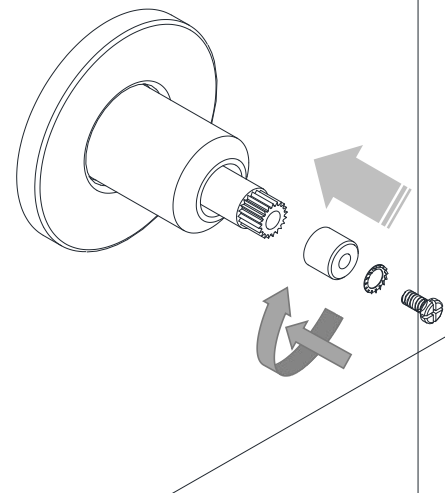
B



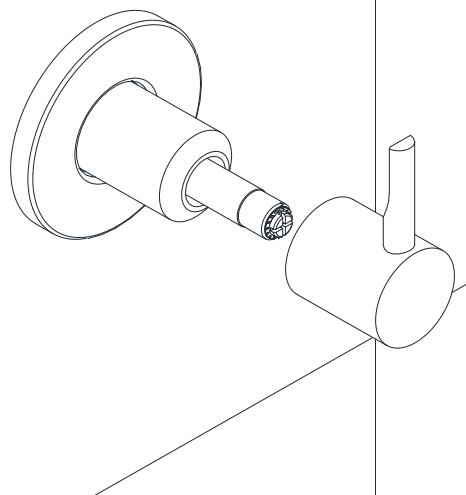
C



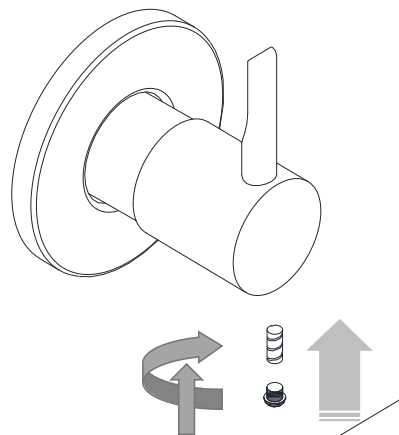
D



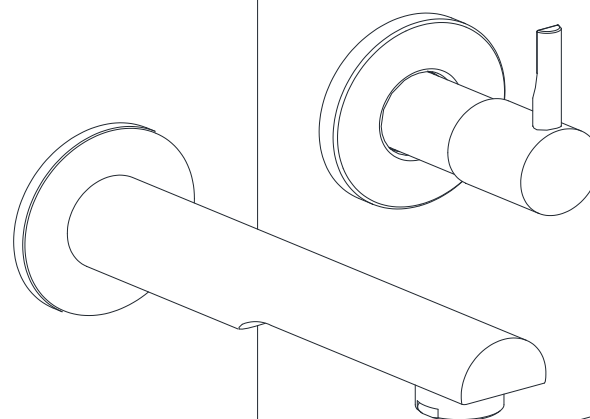
E

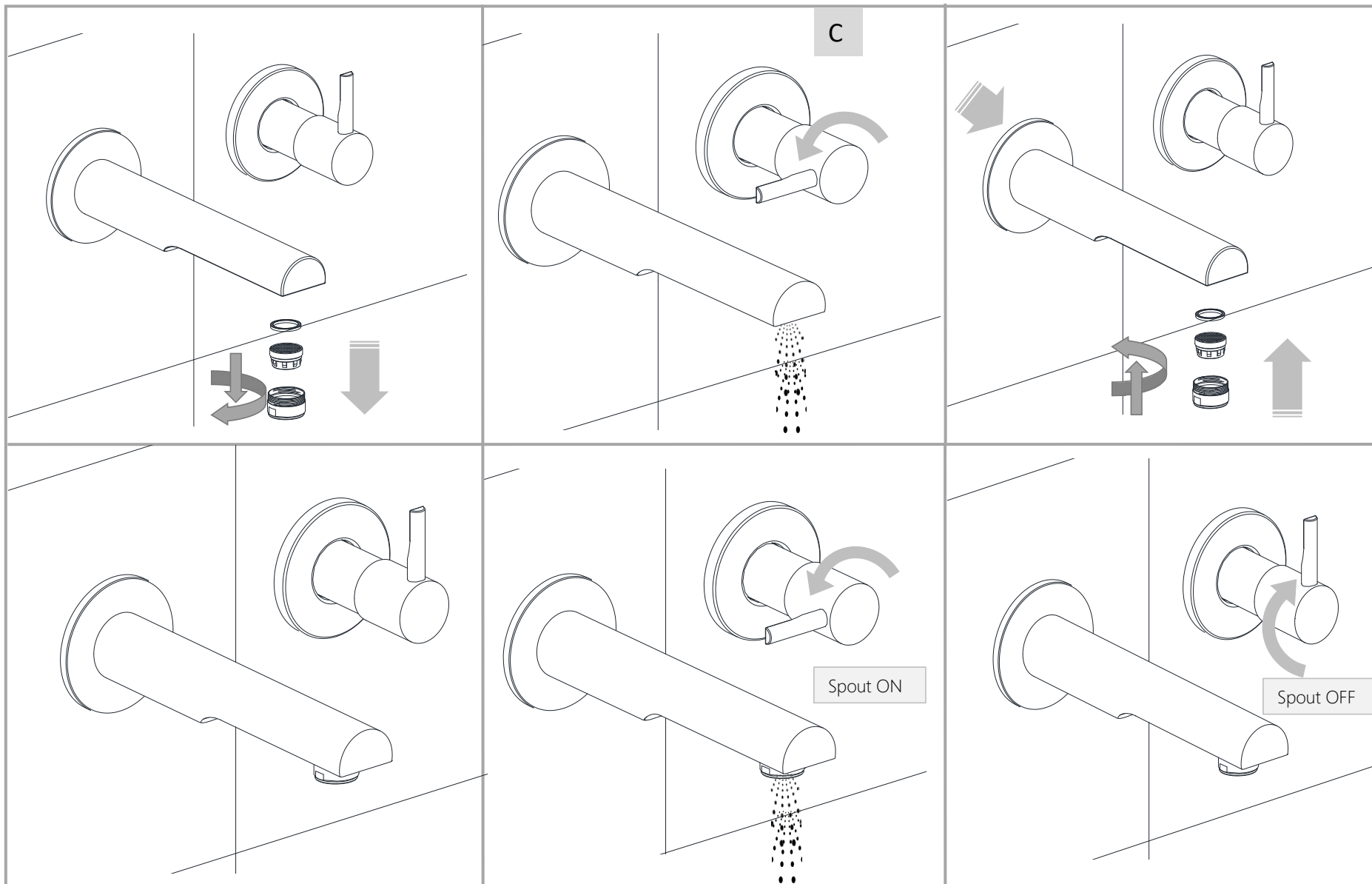


F



G







 <p>LIQUID SOAP PH-5-7</p>	 <p>Apply soft cotton cloth</p>	 <p>WATER</p>	 <p>Apply soft cotton cloth</p>
<p>✗ DON'T</p>  <p>POWDER SOAP</p>	<p>✗ DON'T</p>  <p>Don't apply Scrub</p>	<p><u>Steps & Cleaning agents requirements for Aerator Cleaning.</u></p> <div data-bbox="1114 842 1860 1282"><p>Aerator 1 hour Dip De-Scale Water Liquid Soap PH-5-7</p></div>	