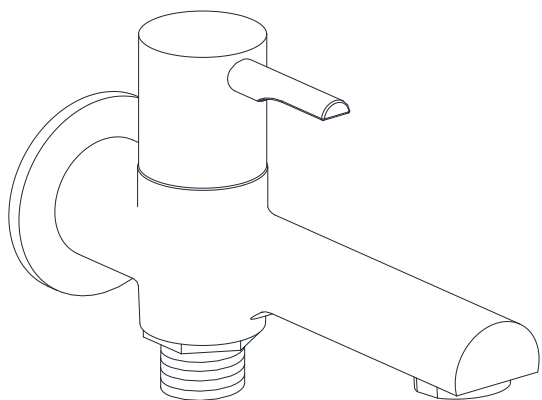
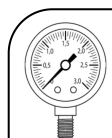




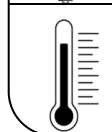
FLP-5041PM



TEMP.& WATER PRESSURE REQUIREMENTS



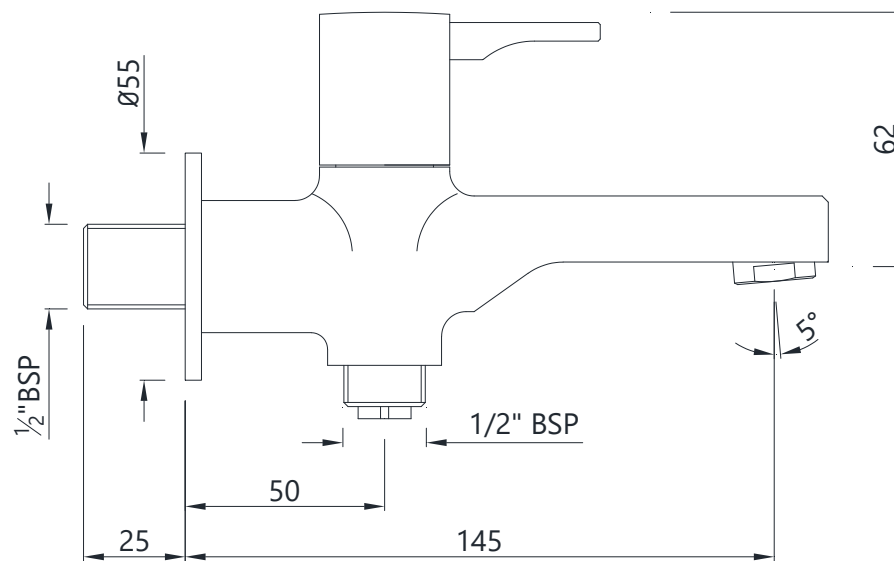
Working Pressure: 1~3 bar



Required Temperature: 5-65°C

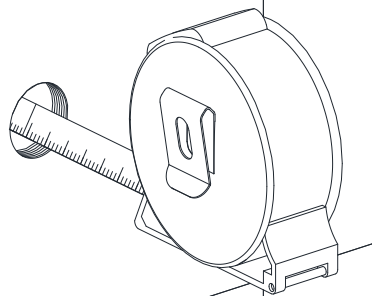
Note: Above are the recommended values for getting
Conventional Output.

TECHNICAL DRAWING



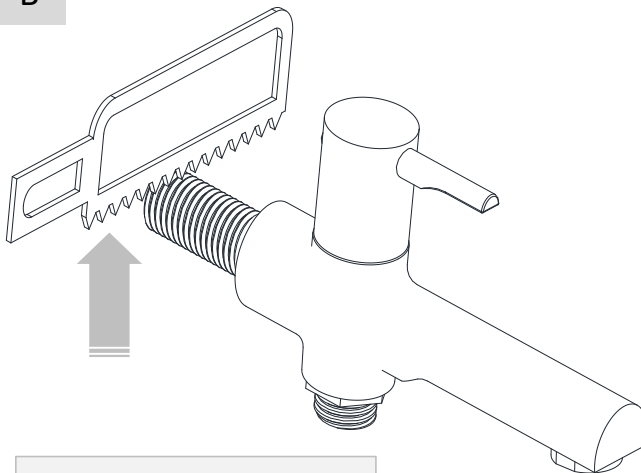


A



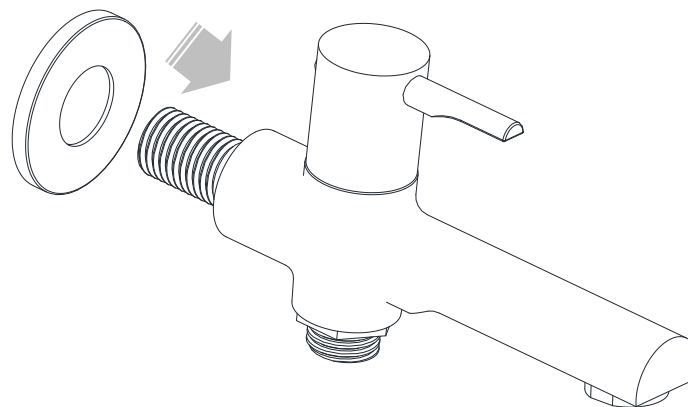
Check depth of Threaded Hole First.

B

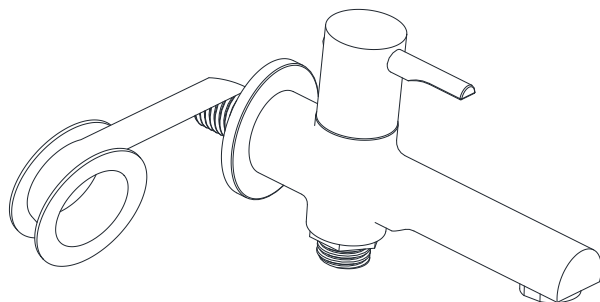


Cut extra Thread Length before inserting spout if Required.

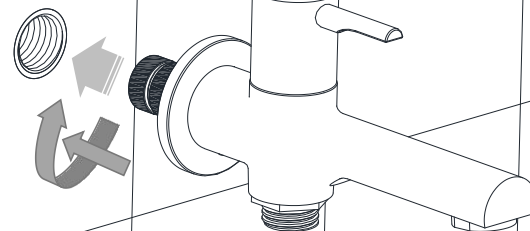
C



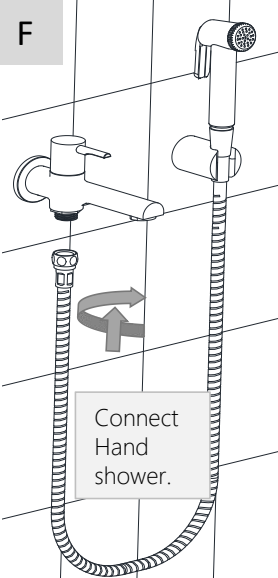
D



E

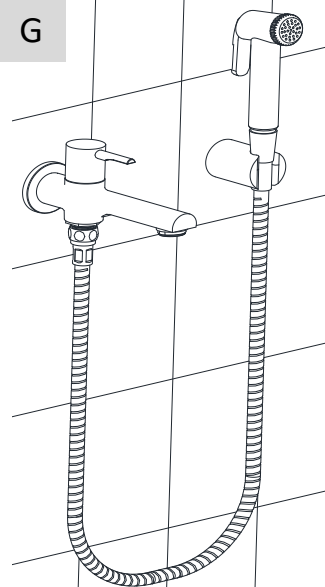


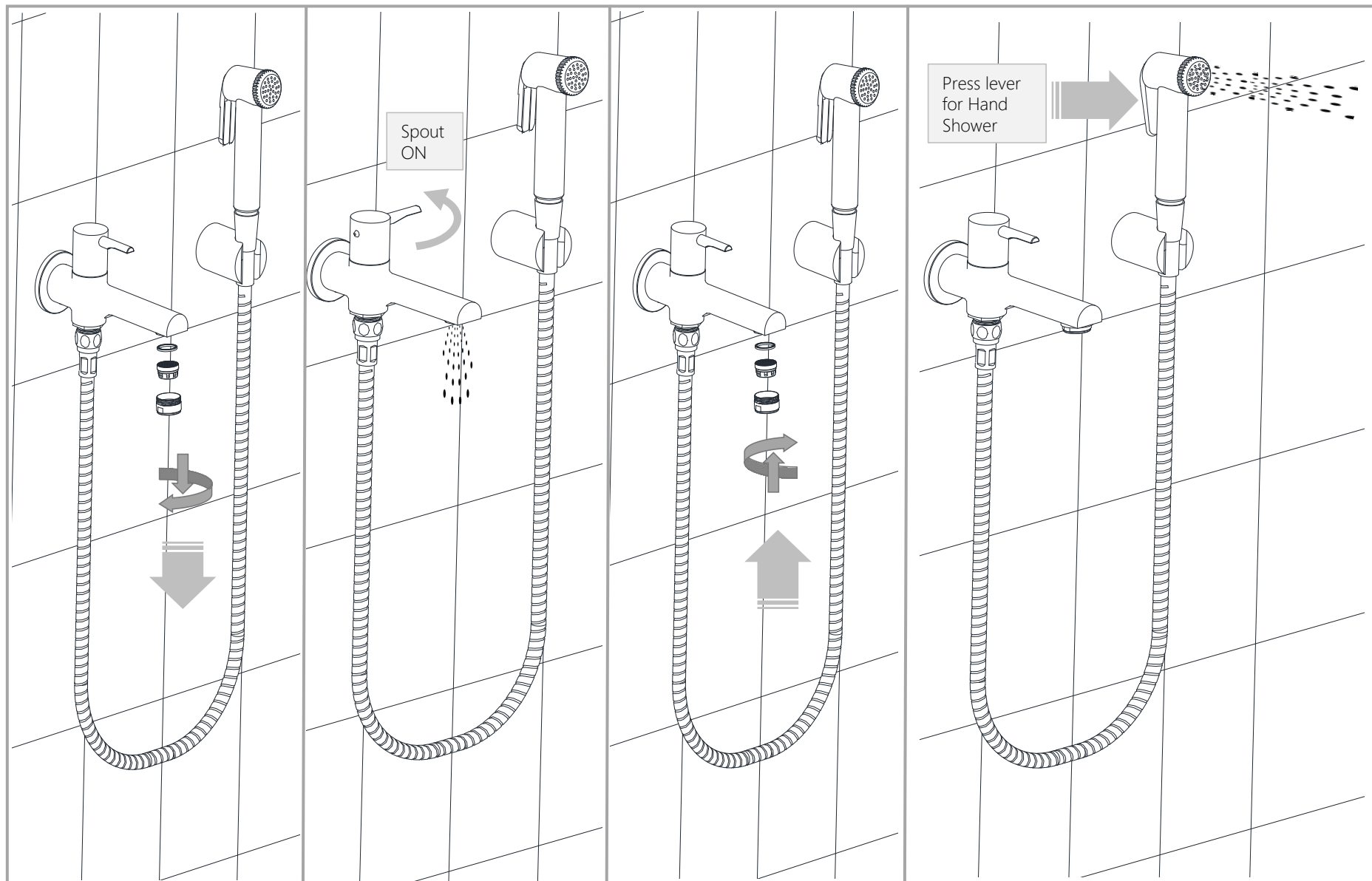
F

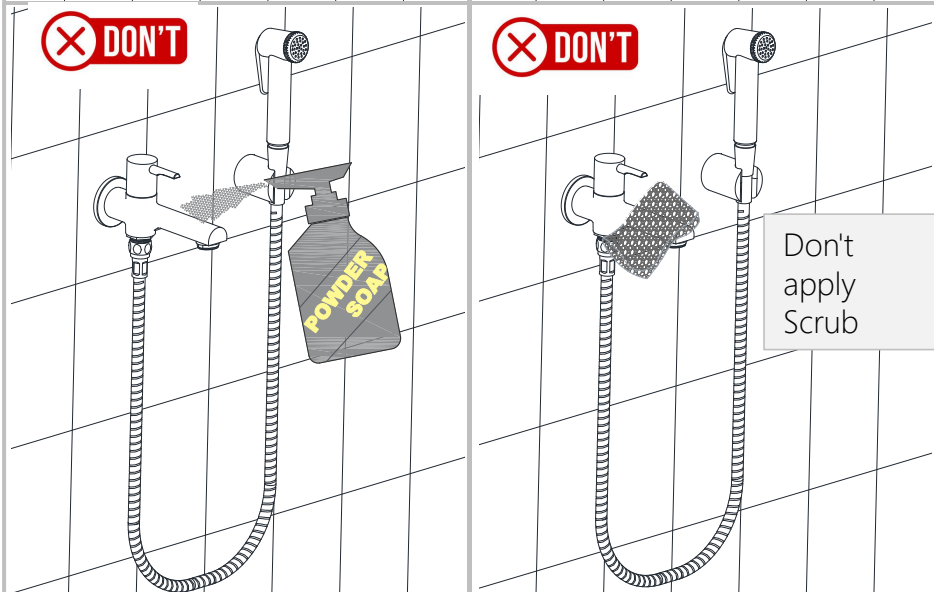
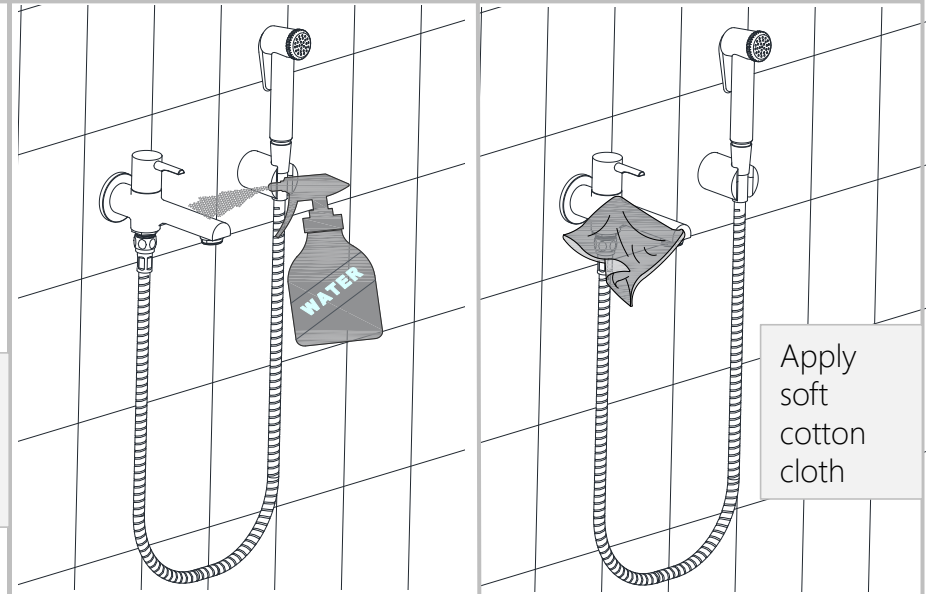
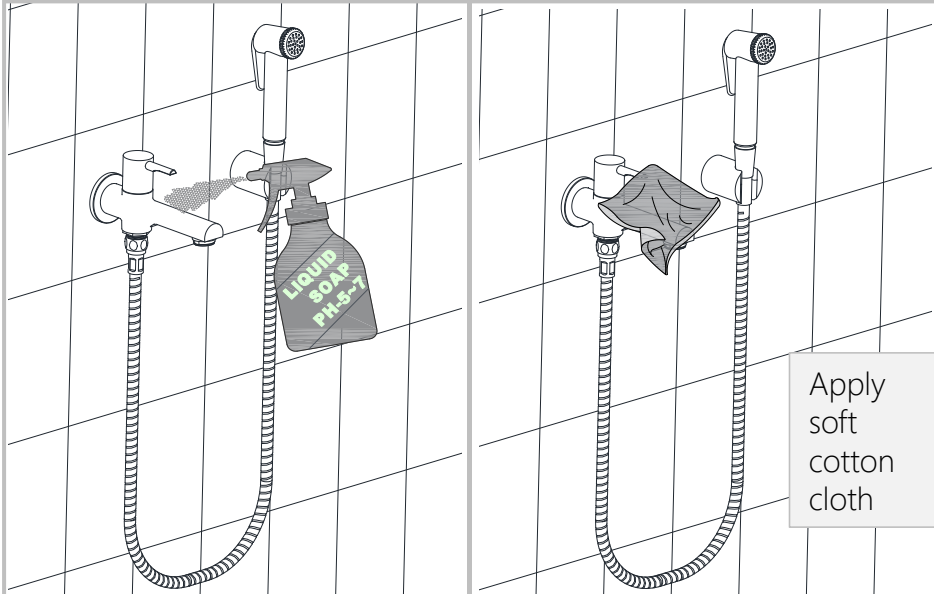


Connect
Hand
shower.

G







Steps & Cleaning agents requirements for Aerator Cleaning.

