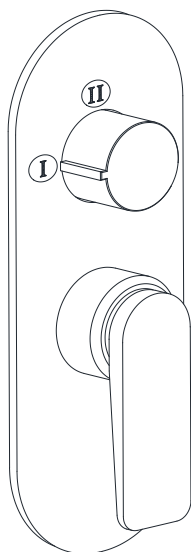
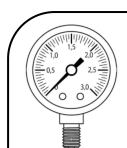




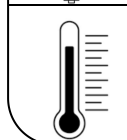
LAG-91783NK



## TEMP.&amp; WATER PRESSURE REQUIREMENTS



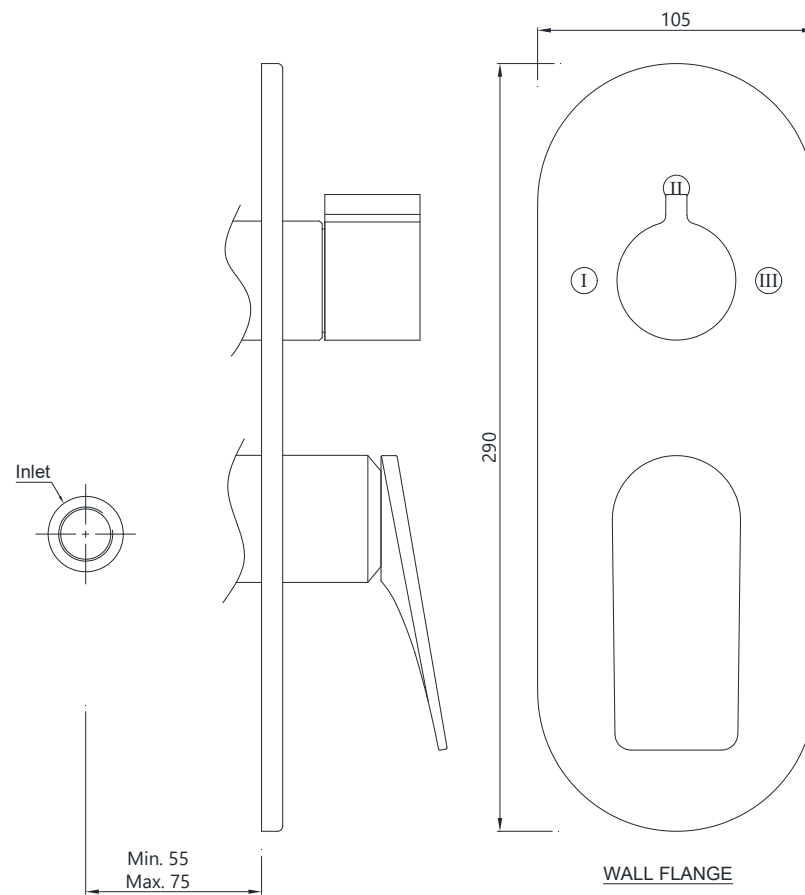
Working Pressure: 1~3 bar

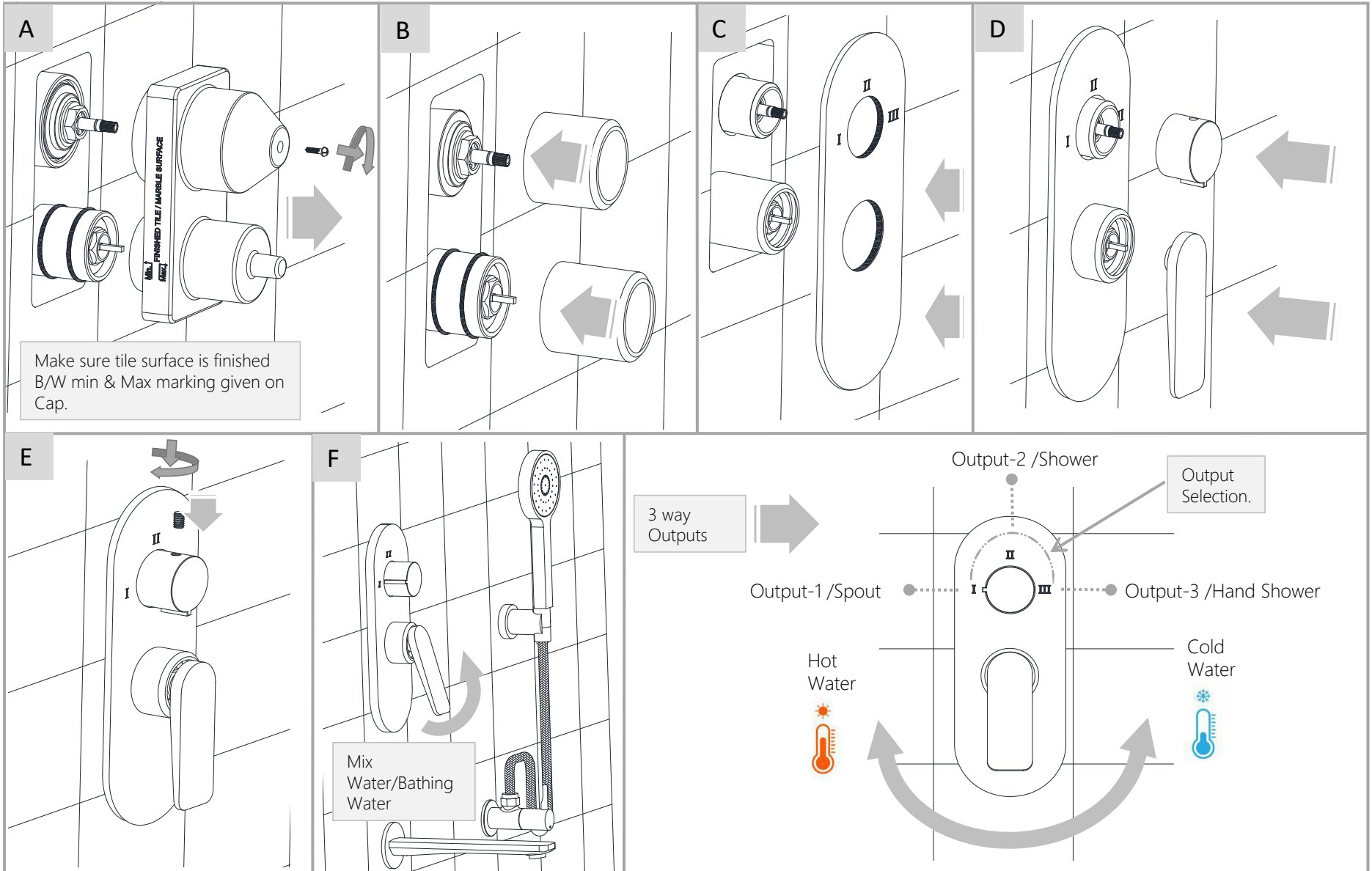


Required Temperature: 5-65°C

Note: Above values are the recommended values for Getting Conventional Outputs.

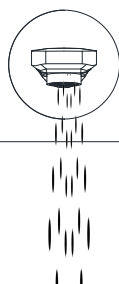
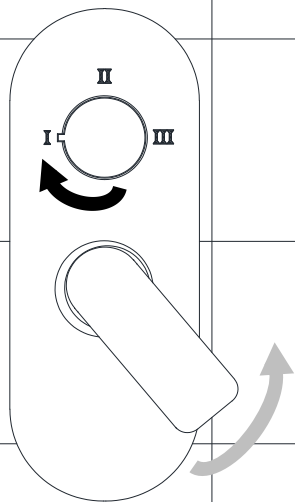
## TECHNICAL DRAWING



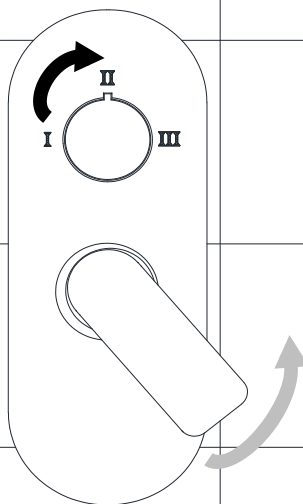
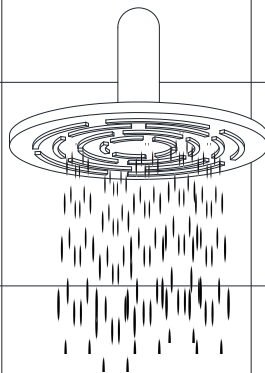




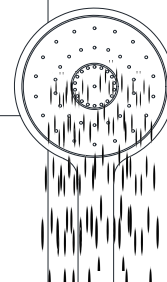
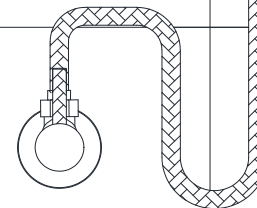
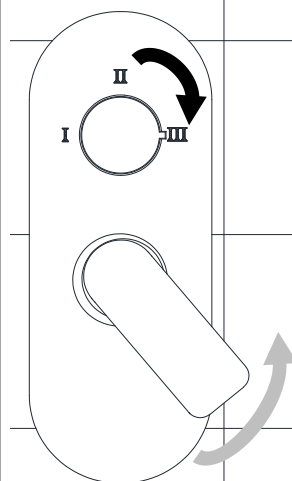
## SPOUT OUTPUT

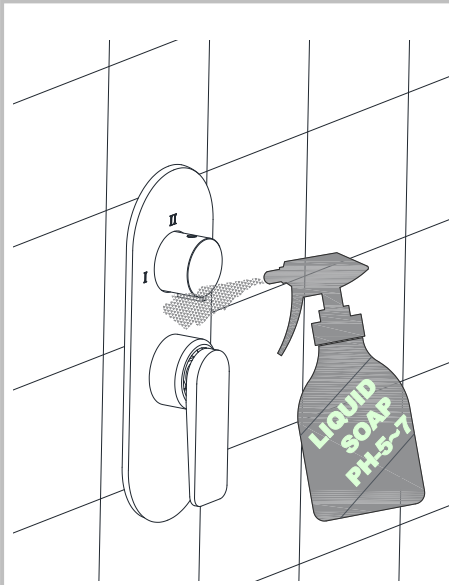


## OVER HEAD SHOWER OUTPUT

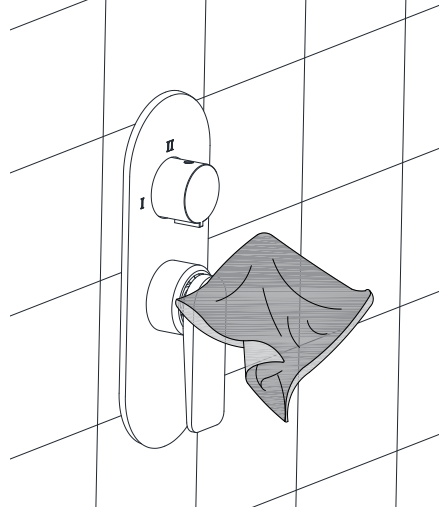


## HAND SHOWER OUTPUT

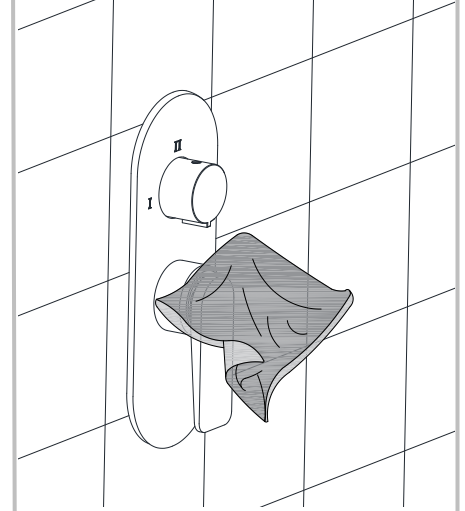




Apply soft cotton cloth



Apply soft cotton cloth

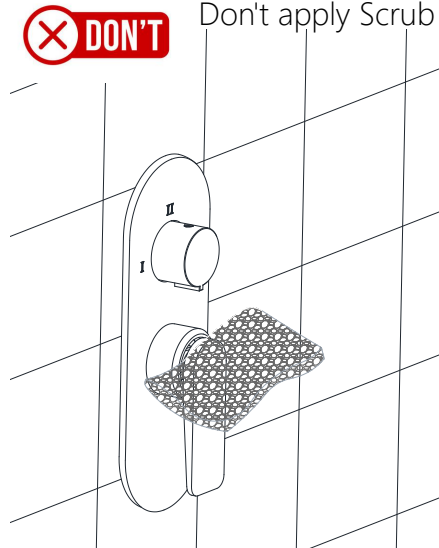


**✗ DON'T**



**✗ DON'T**

Don't apply Scrub



Steps & Cleaning agents requirements for Aerator Cleaning.

