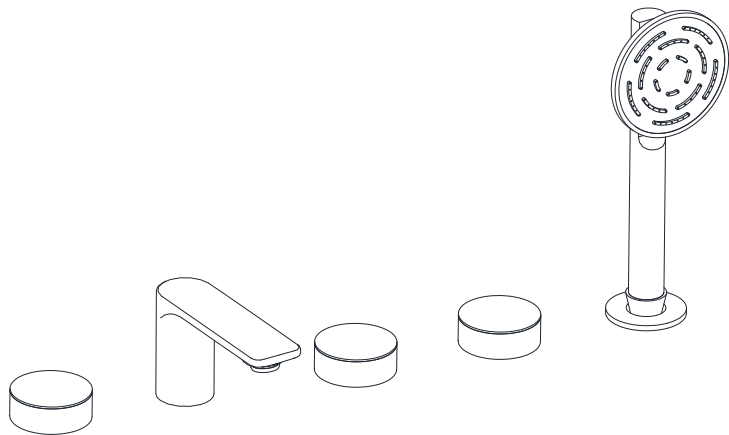
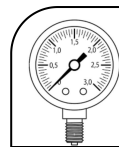




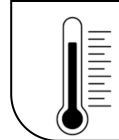
LAG-91287



TEMP.& WATER PRESSURE REQUIREMENTS



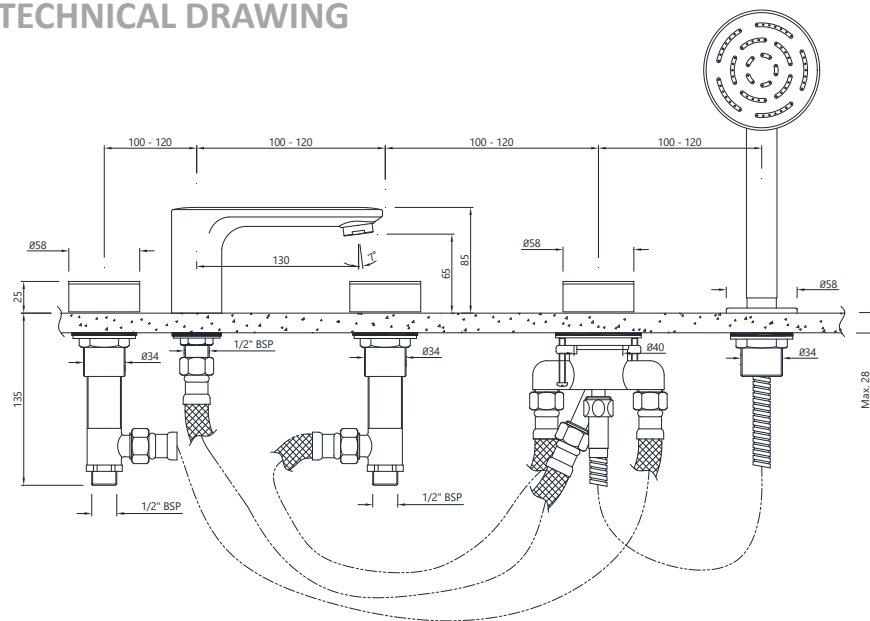
Working Pressure: 1~3 bar



Required Temperature: 5-65°C

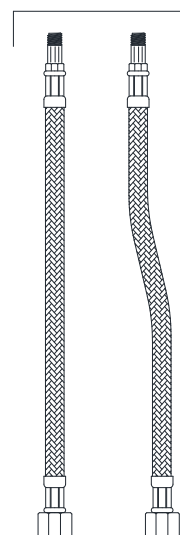
Note: Above values are the recommended values for Getting Conventional Outputs.

TECHNICAL DRAWING

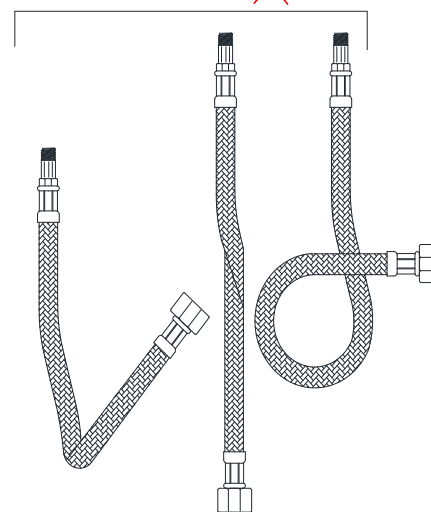


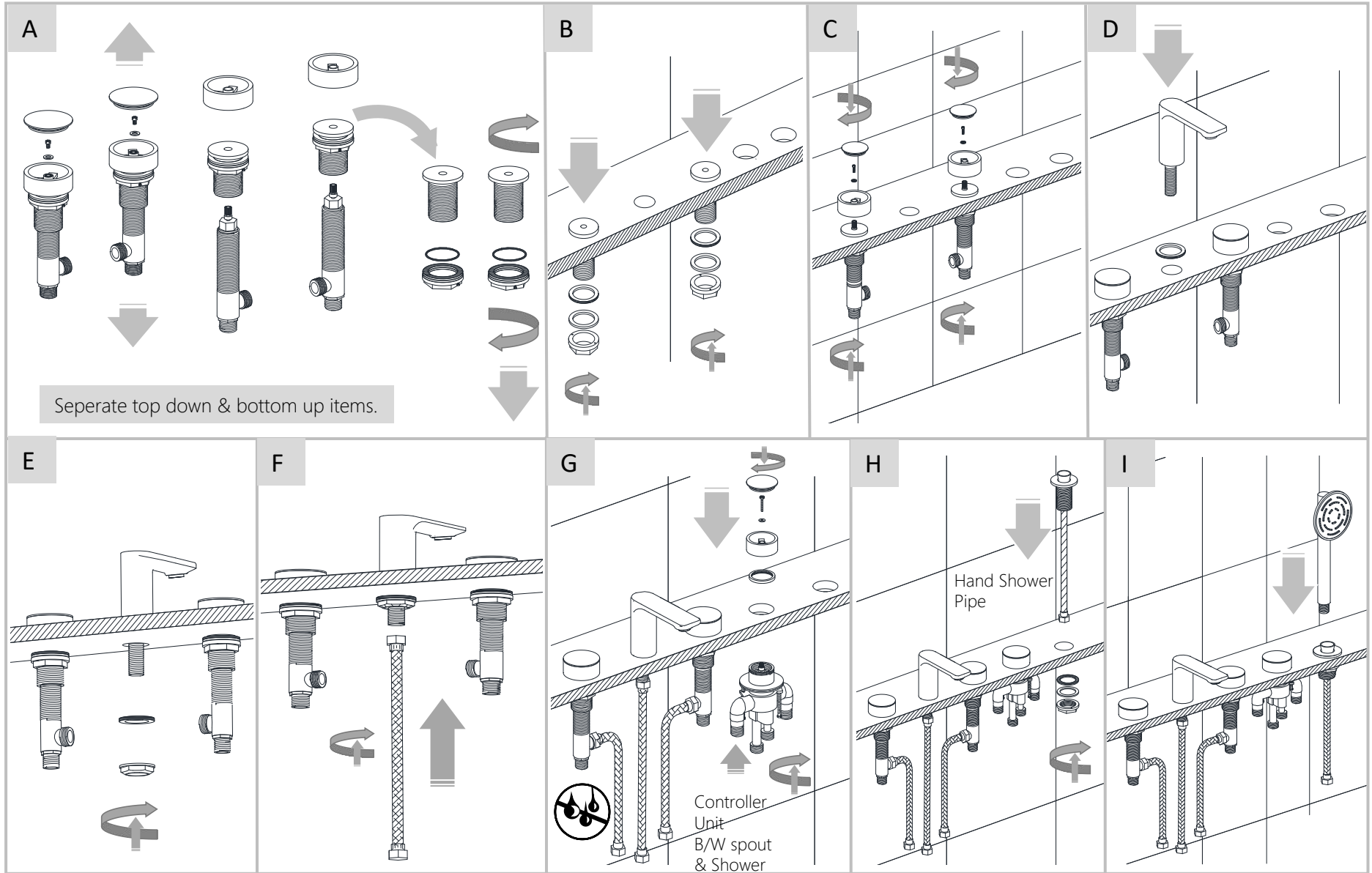
TAKE CARE DURING CONNECTION'S

DO ✓



DON'T ✗



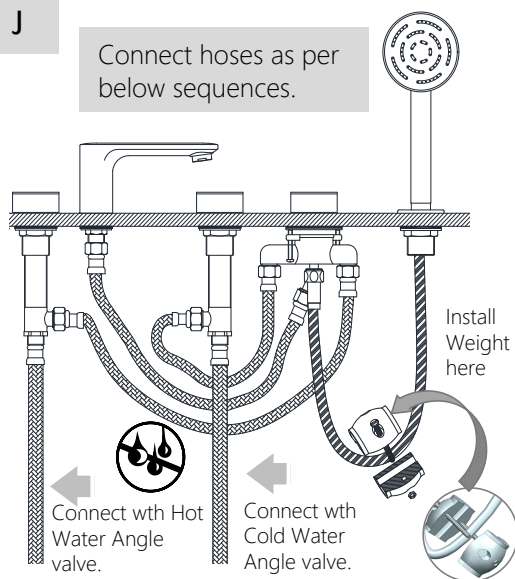


HOW TO OPERATE

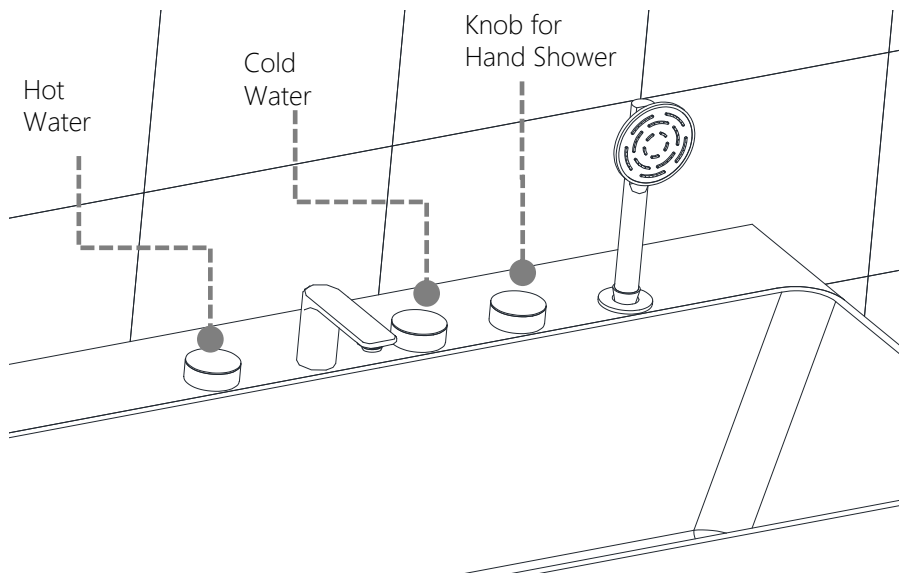
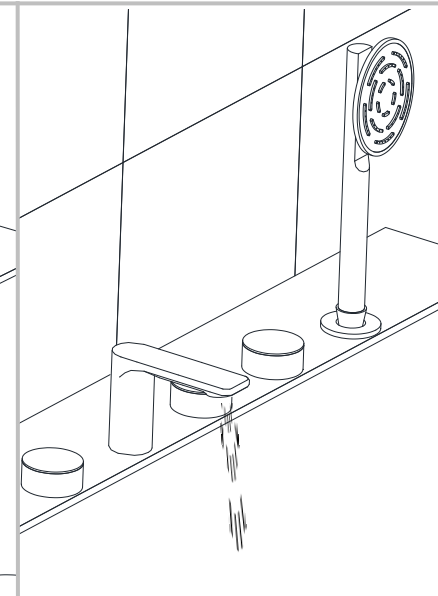
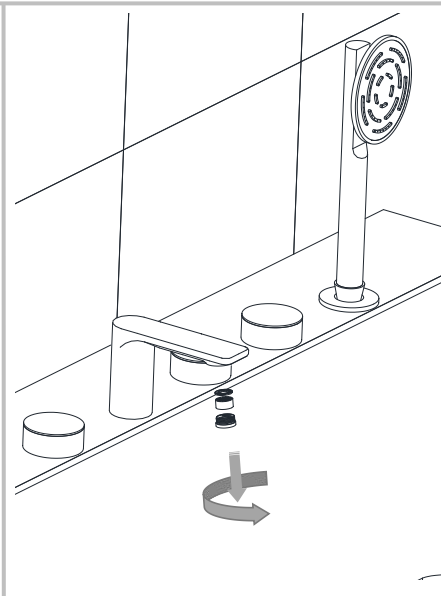
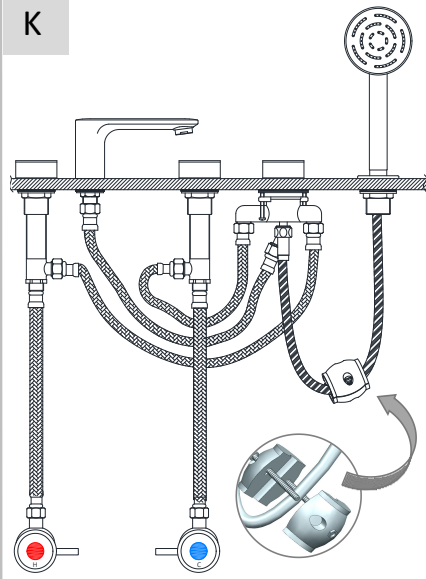


J

Connect hoses as per below sequences.



K



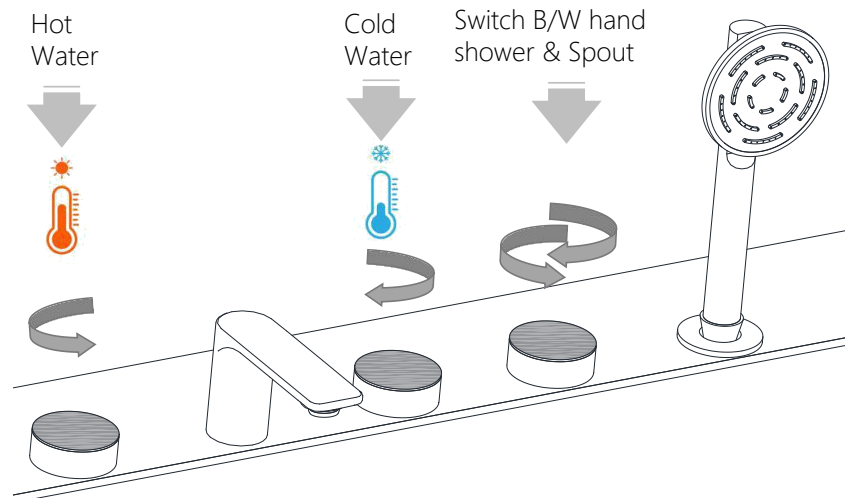
Hot Water

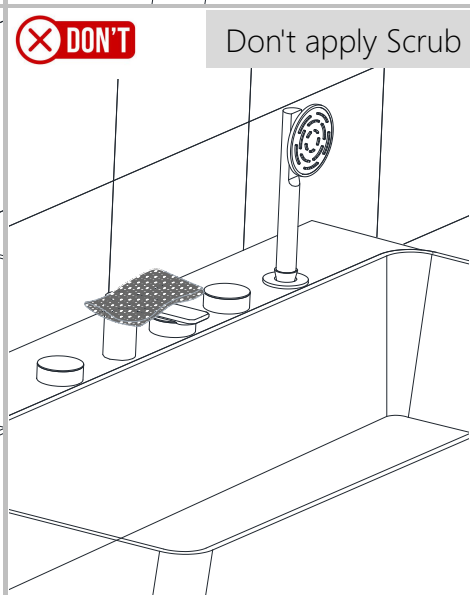
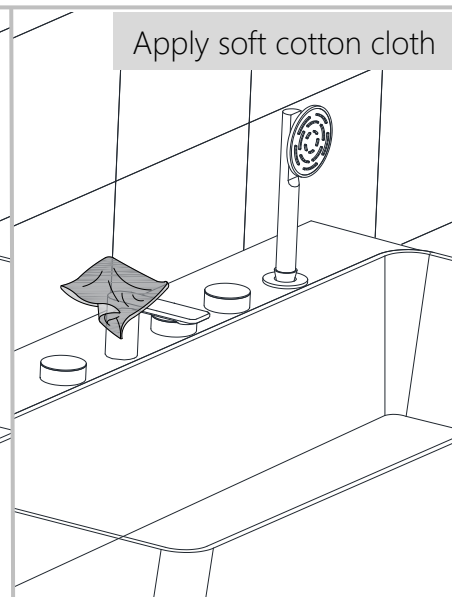
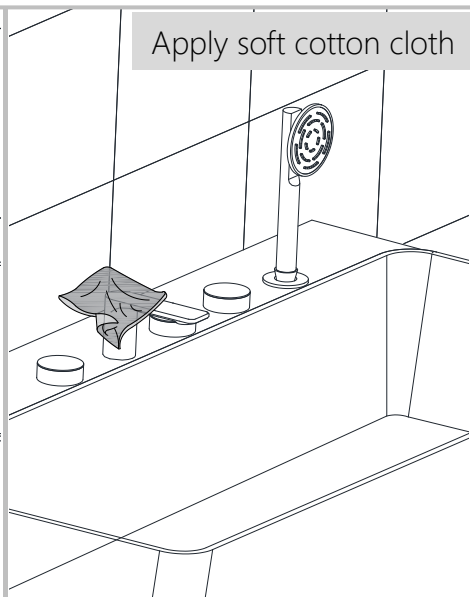


Cold Water



Switch B/W hand shower & Spout





Steps & Cleaning agents requirements for Aerator Cleaning.

