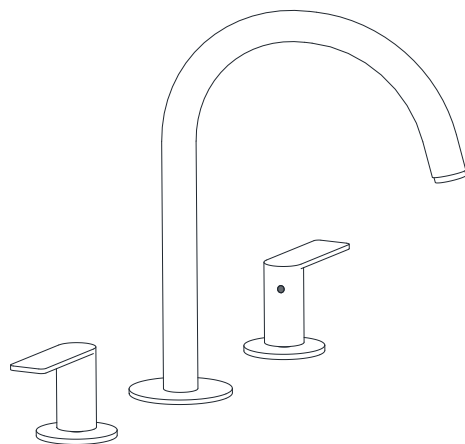




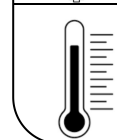
## LAG-91189PSL



## TEMP.&amp; WATER PRESSURE REQUIREMENTS



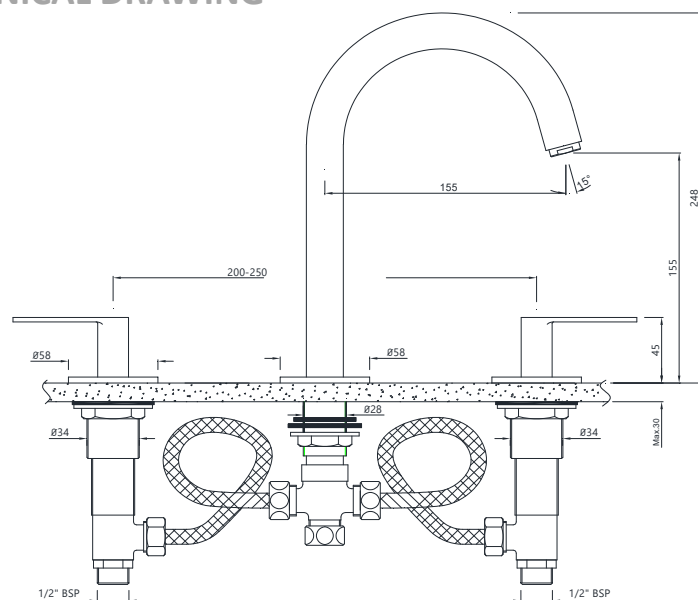
Working Pressure: 1~3 bar



Required Temperature: 5-65°C

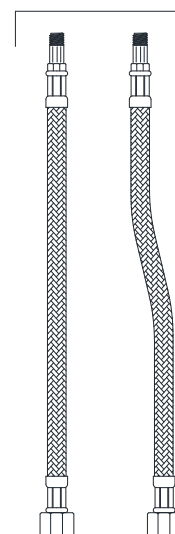
Note: Above values are the recommended values for Getting Conventional Outputs.

## TECHNICAL DRAWING

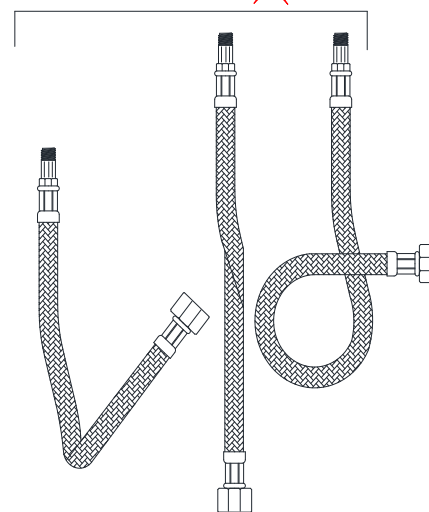


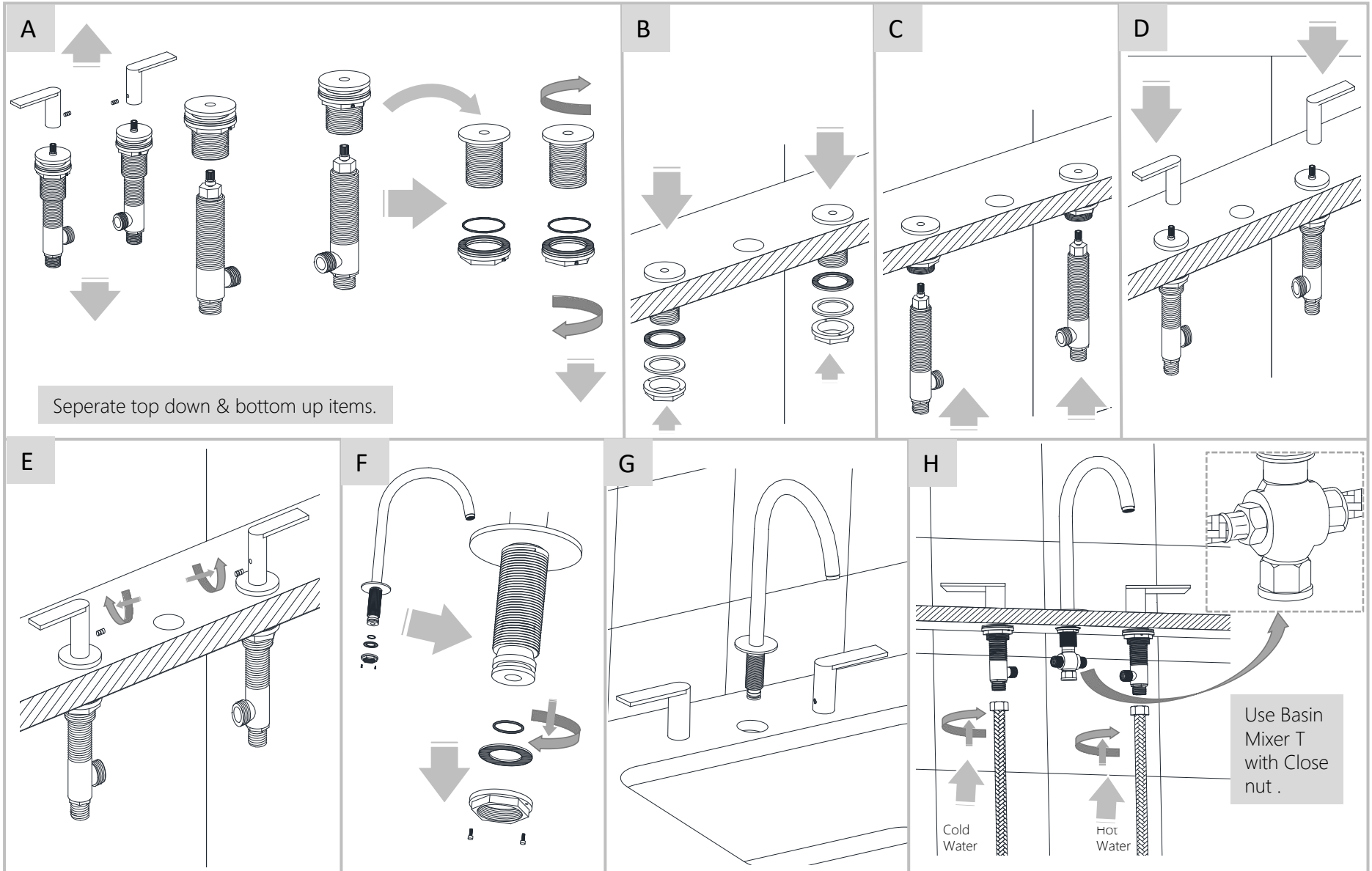
## TAKE CARE DURING CONNECTION'S

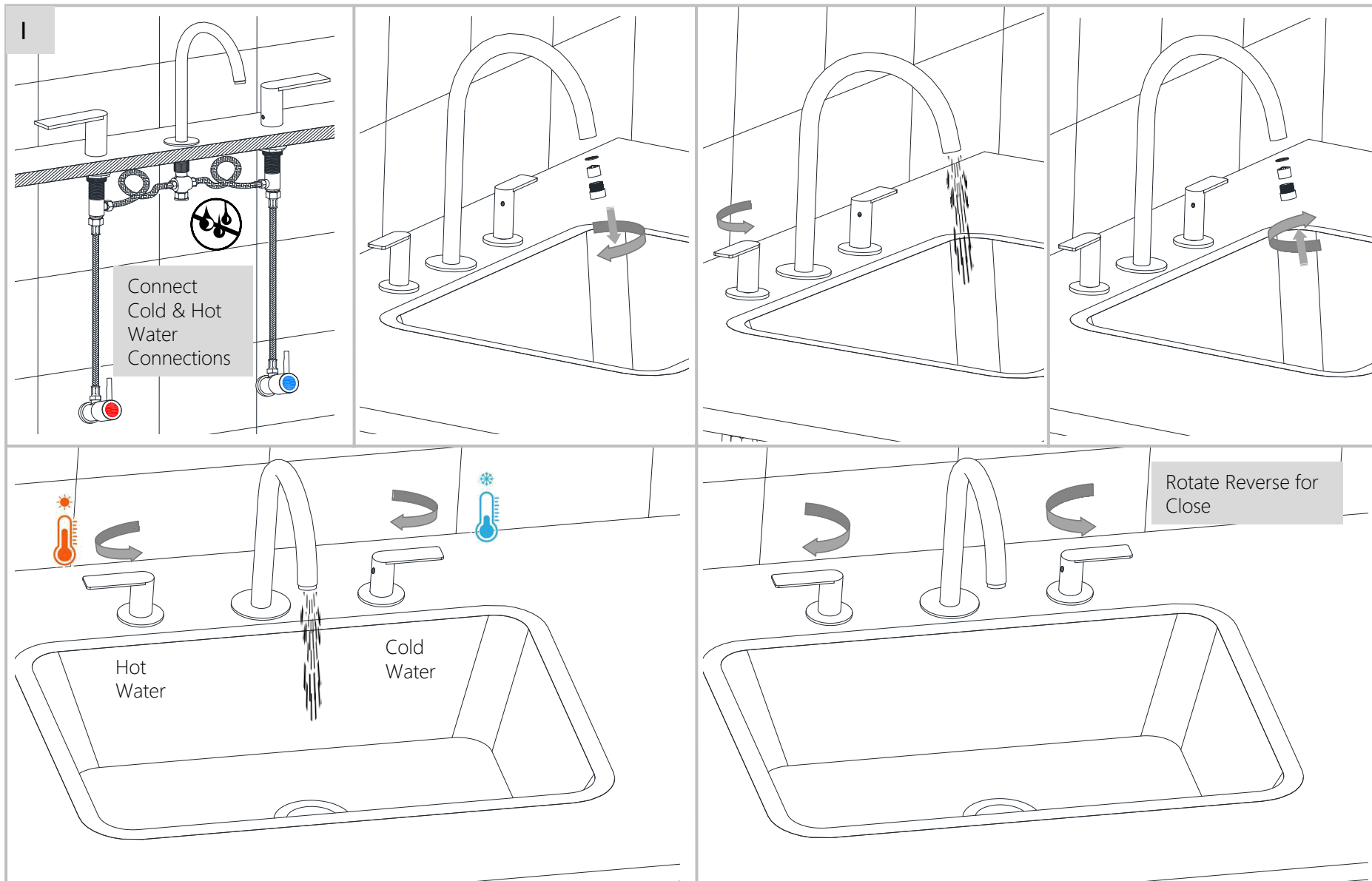
DO ✓

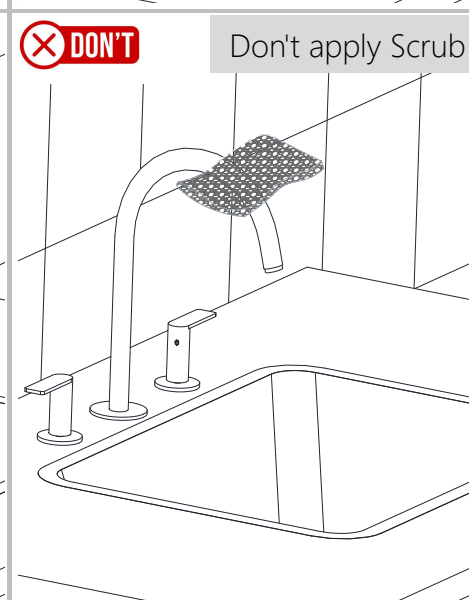
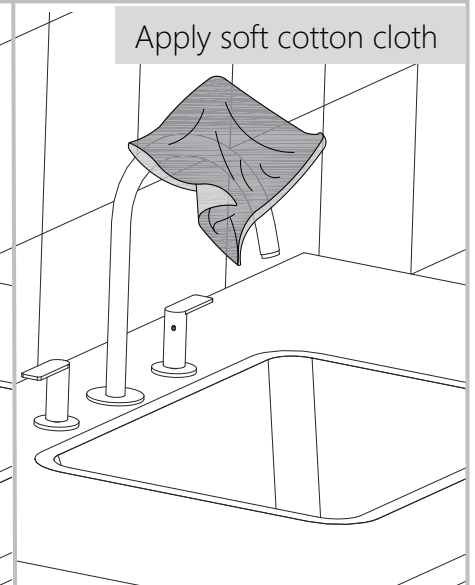
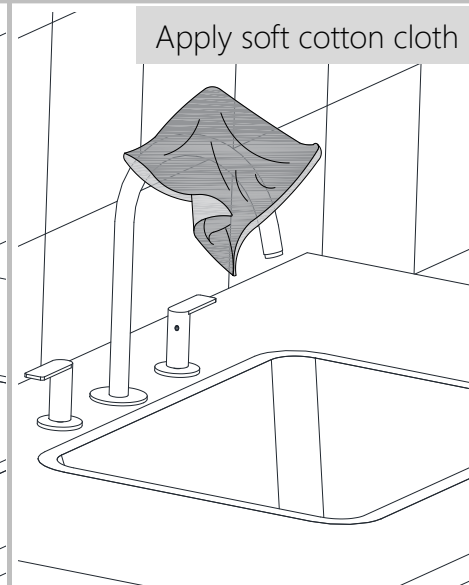


DON'T ✗









Steps & Cleaning agents requirements for Aerator Cleaning.

