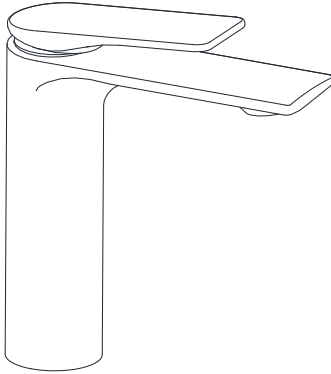
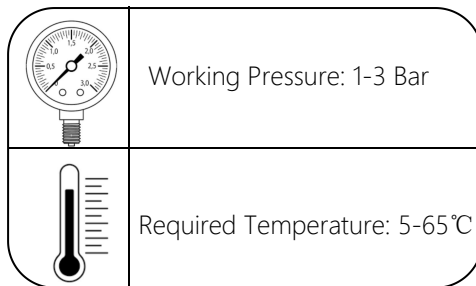




LAG-91023B

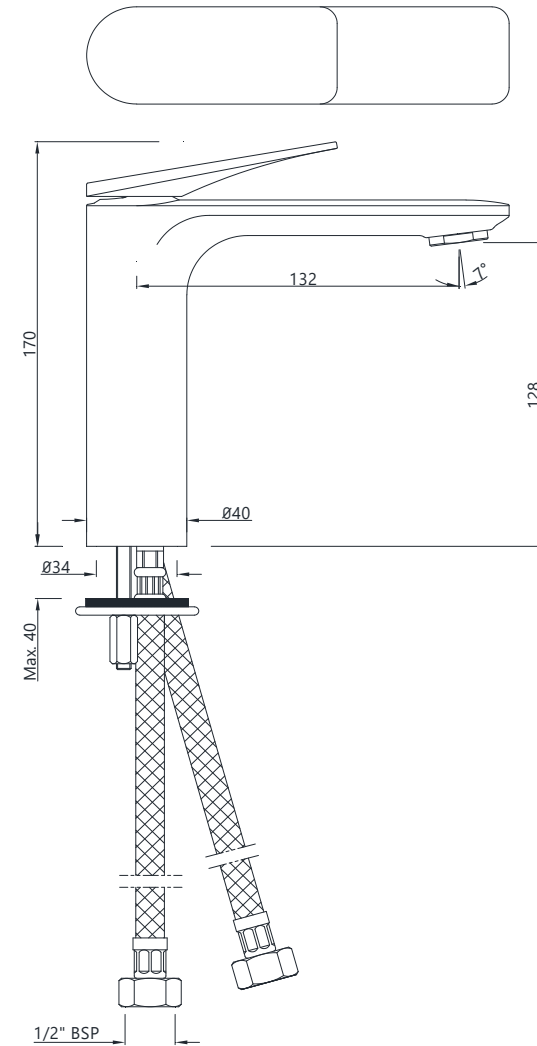


TEMP.& WATER PRESSURE REQUIREMENTS

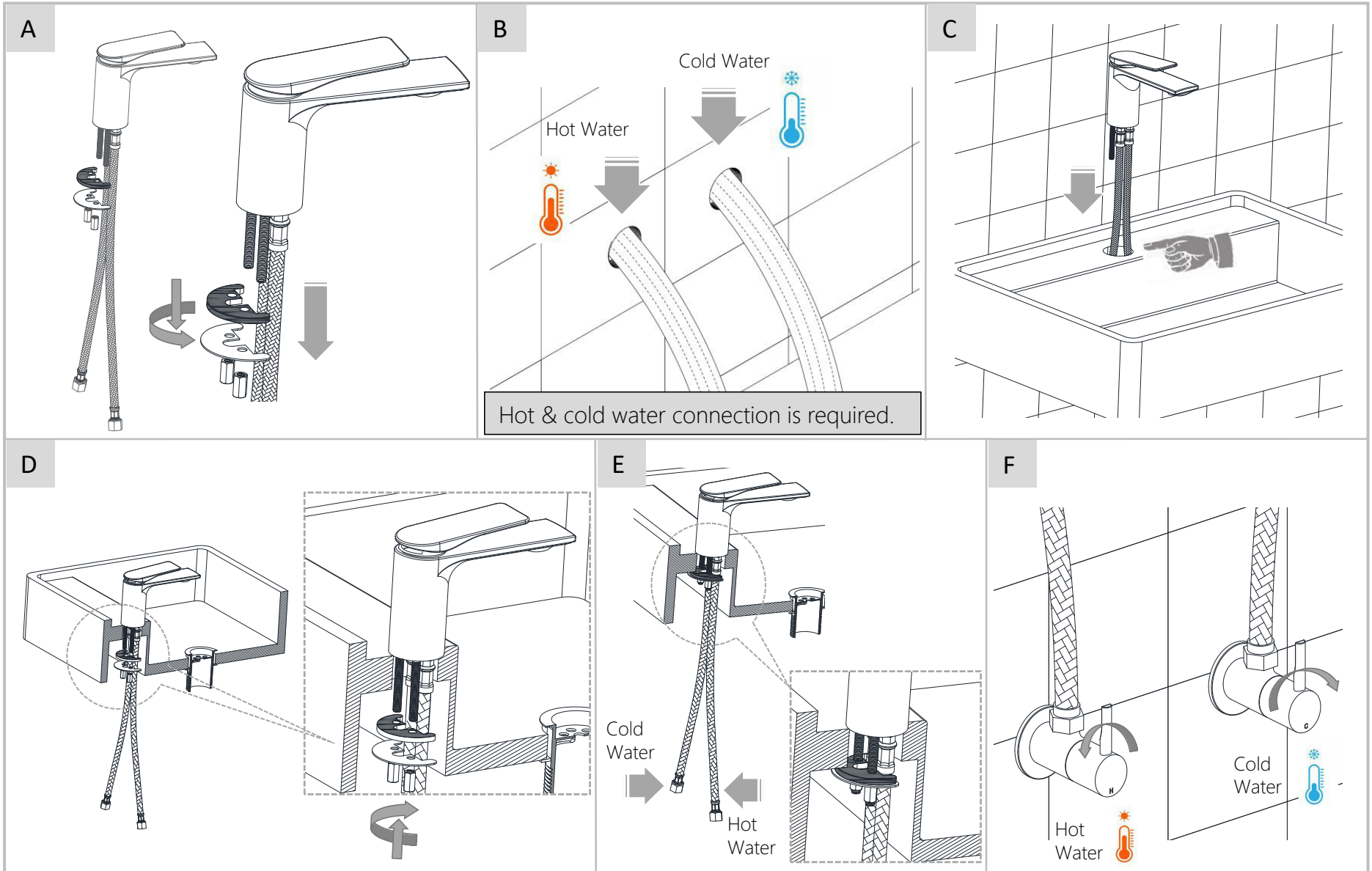


Note: Above values are the recommended values for Getting Conventional Outputs.

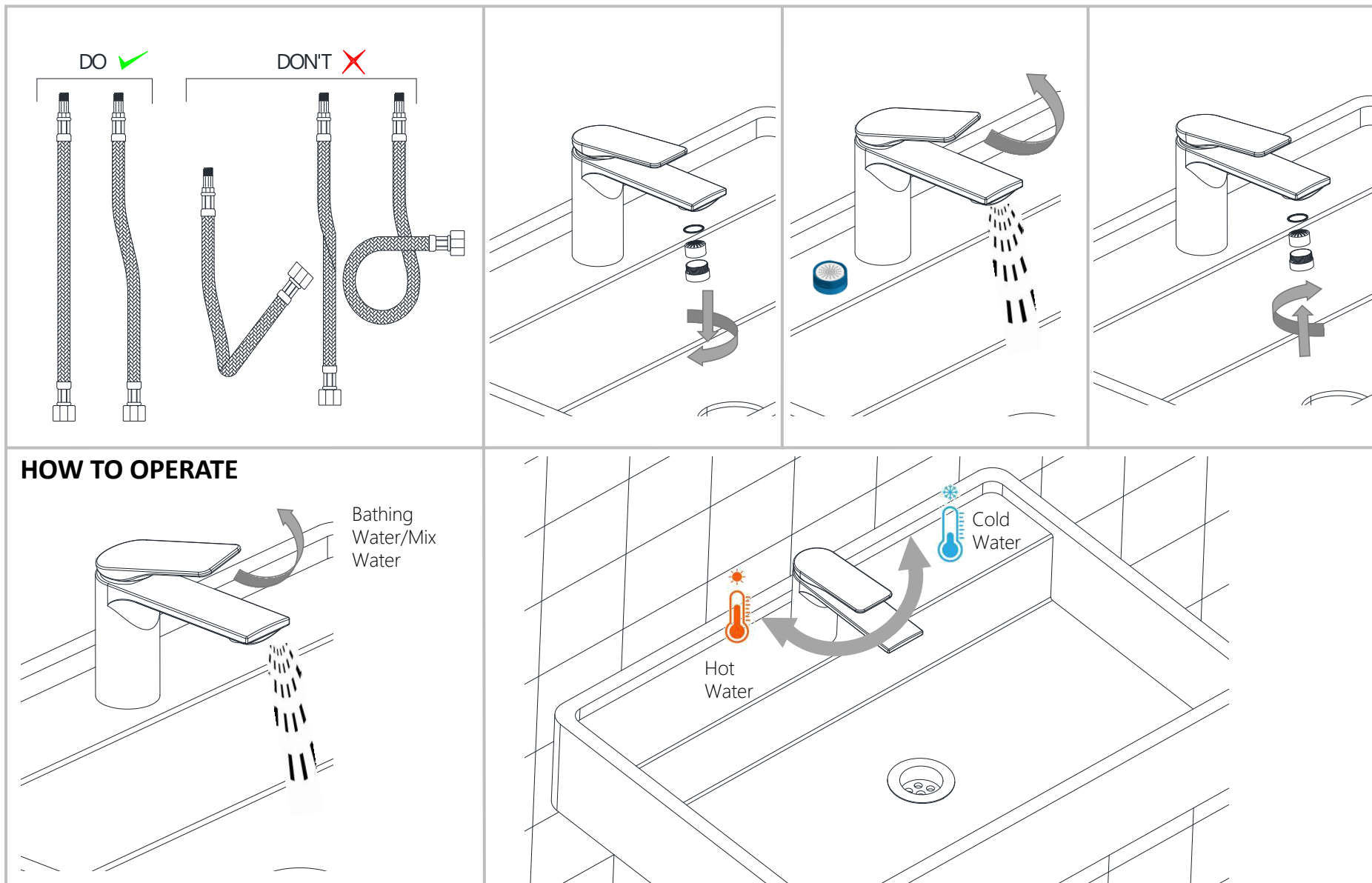
TECHNICAL DRAWING

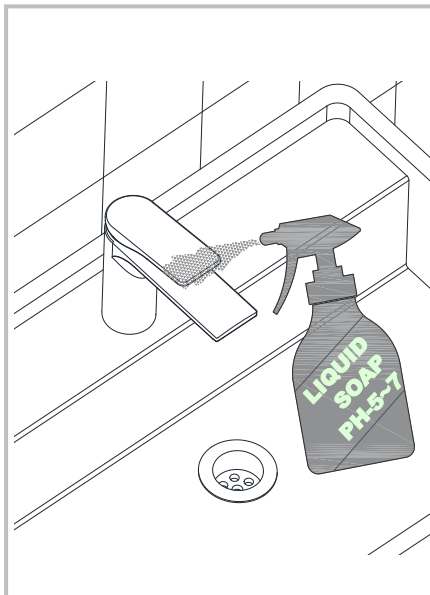


HOW TO INSTALL (Basin Mixer W/O Pop up)

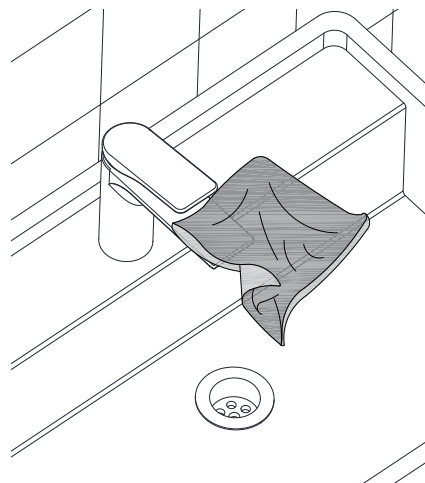


Note: This Installation Method is applicable for Single Lever Basin Mixer without Pop up Waste.

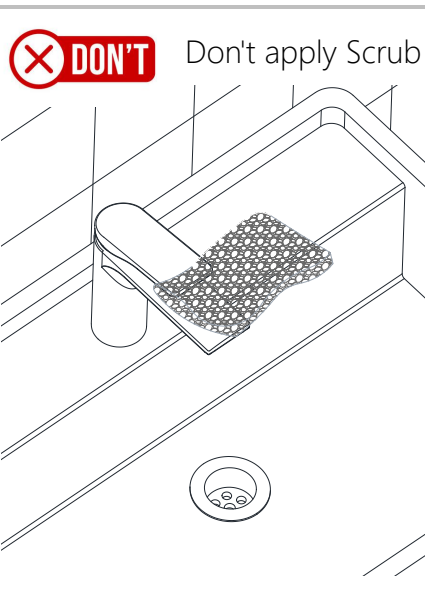
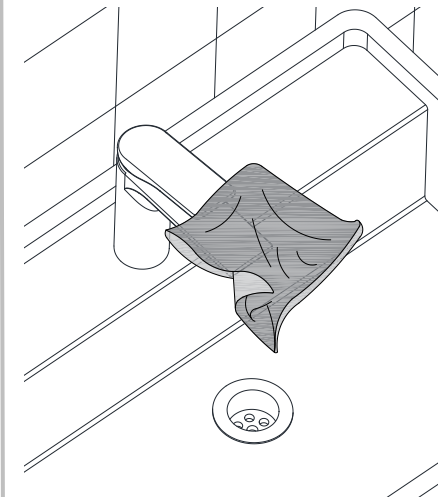




Apply soft cotton cloth



Apply soft cotton cloth



Don't apply Scrub

Steps & Cleaning agents requirements for Aerator Cleaning.

