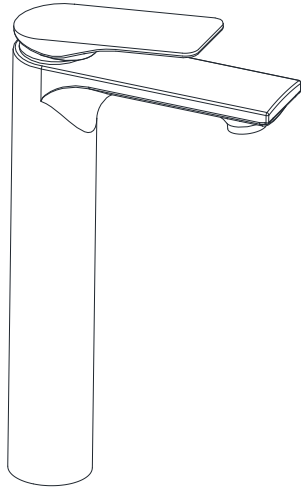
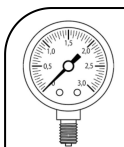




LAG-91005B



TEMP.& WATER PRESSURE REQUIREMENTS



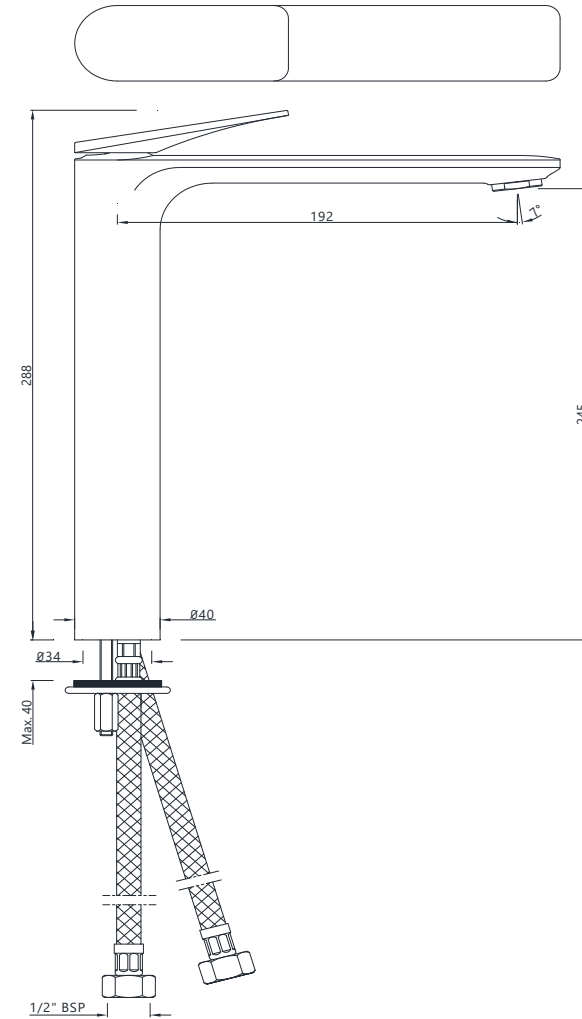
Working Pressure: 1-3 Bar



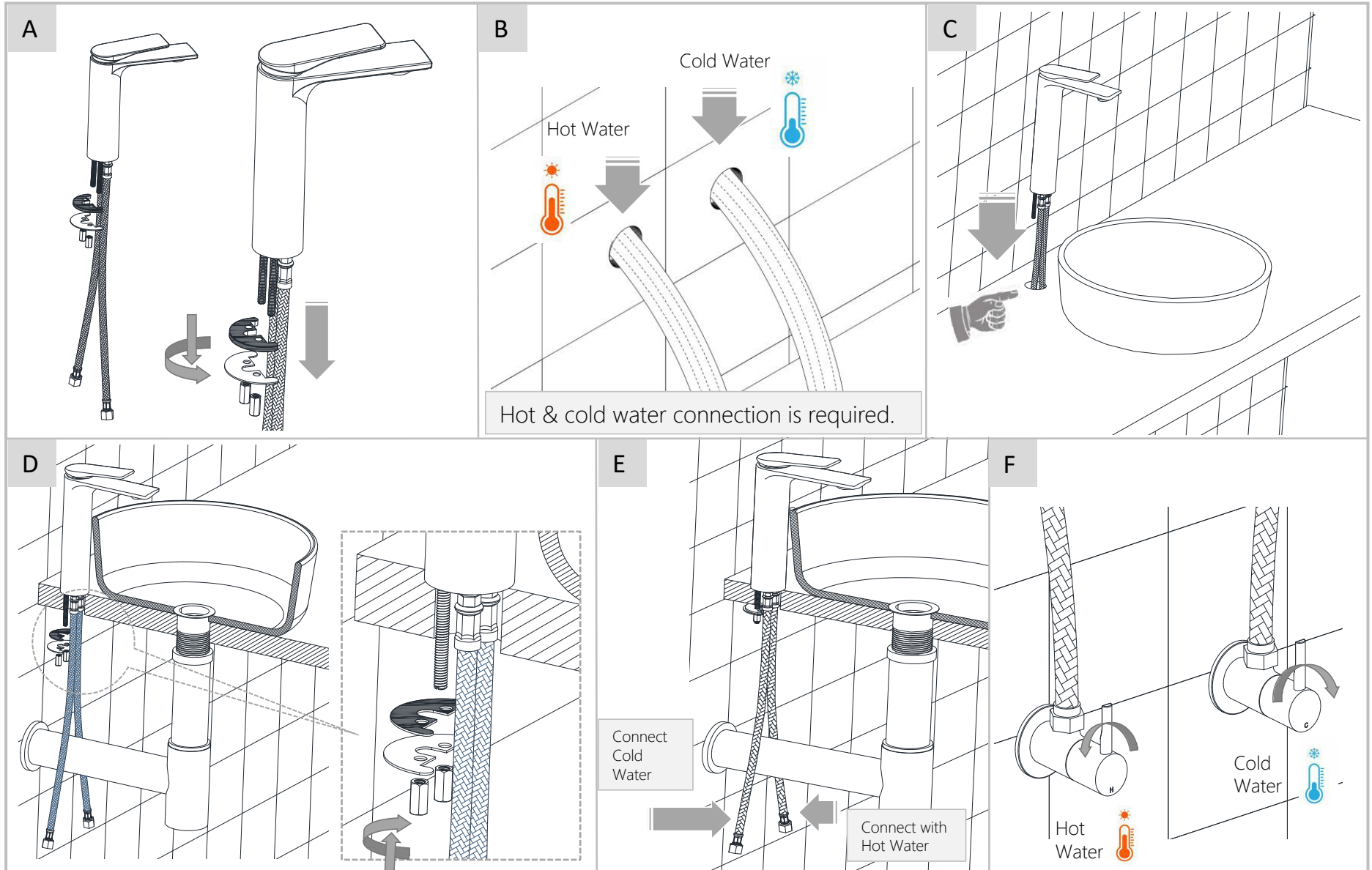
Required Temperature: 5-65°C

Note: Above values are the recommended values for Getting Conventional Outputs.

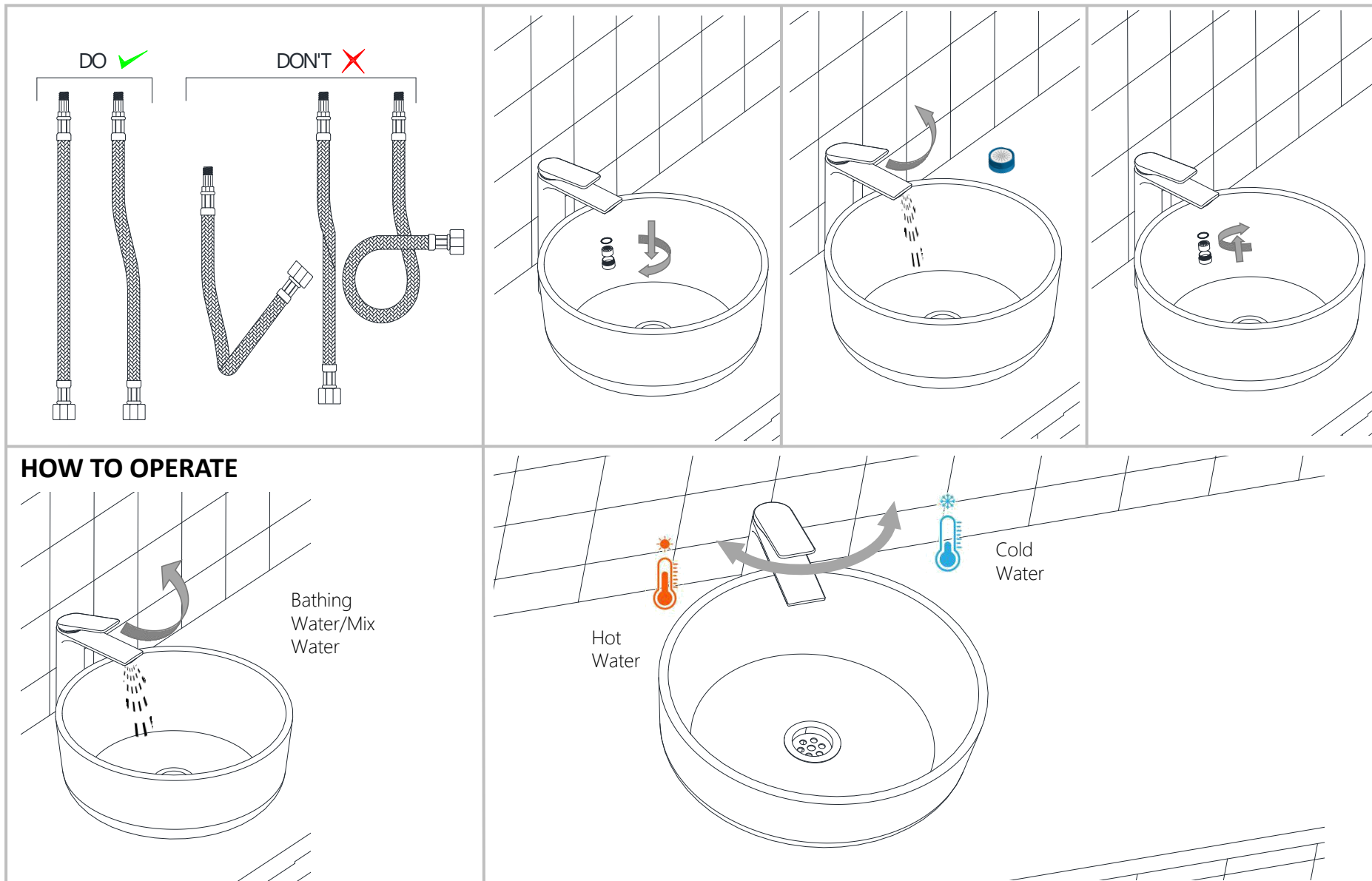
TECHNICAL DRAWING



HOW TO INSTALL (Basin Mixer W/O Pop up)

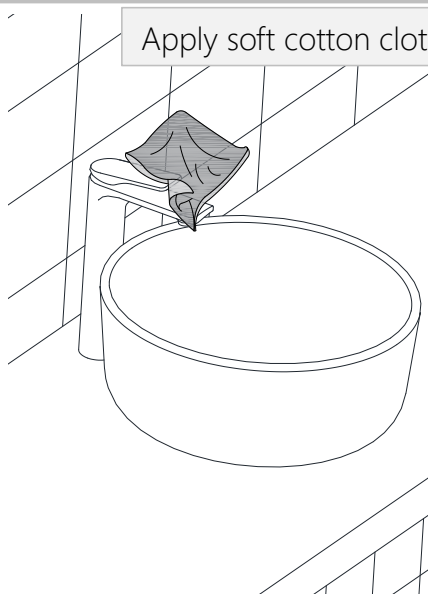


Note: This Installation Method is applicable for Single Lever Basin Mixer without Pop up Waste.

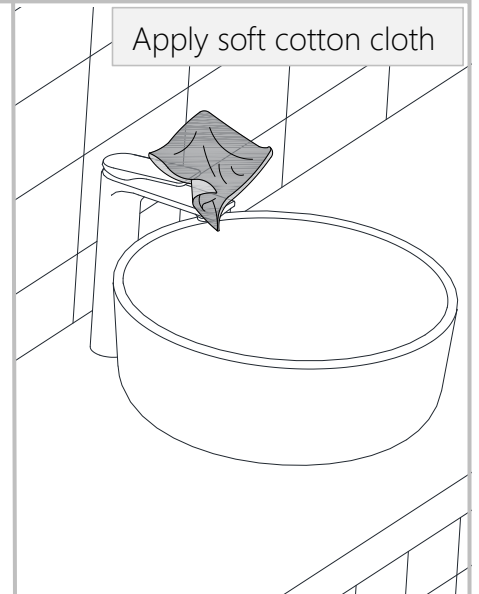




Apply soft cotton cloth



Apply soft cotton cloth

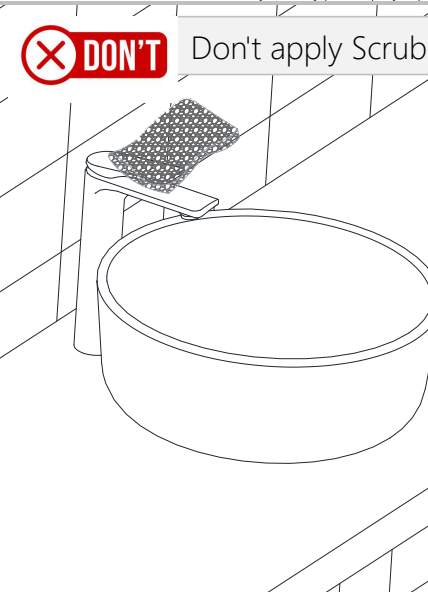


✗ DON'T



✗ DON'T

Don't apply Scrub



Steps & Cleaning agents requirements for Aerator Cleaning.

