



VGS-WHT-81803+VGS-WHT-81307

SPECIFICATION DATA SHEET

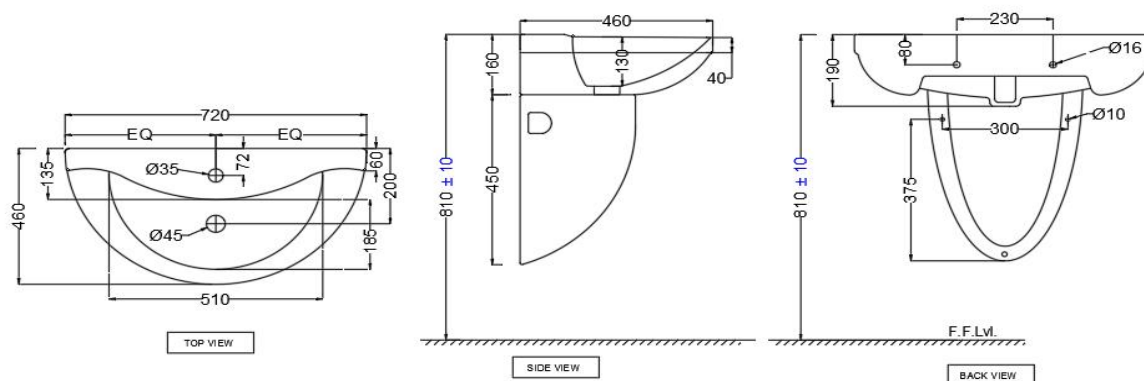
PRODUCT DETAILS

Manufacturer	Jaquar	Type:	Wall Hung Basin With Half Pedestal
Outlet	Vertical	Colour:	White
Technical Details	Tap hole $\varnothing 35 \pm 2$ mm	Material:	Ceramic - Vitreous China
	ID of waste outlet hole $\varnothing 45 \pm 3$ mm		
	Horizontal distance between the centre line of the tap hole and the centre line of the waste outlet hole ≤ 128 mm		

PRODUCT IMAGE



TECHNICAL DRAWING



Product Dimension	720X460X190mm With Half Pedestal 610 mm	FEATURES
Basin Inner Dimension	510x185x130 mm	
Product Weight	27 kg	
ACCESSORIES INCLUDED		
Overflow hole Cap		ZPS-WHT-9012B
Rag bolt		ZPS-MST-RB03
Pedestal fixing screw		ZPS-MST-FB05

CERTIFICATION

Compliance : EN 14688 : 2015 (E) A ,MS 2578: 2014, AMD. 1: 2017, SANS 497 : 2011

All technical dimensions are in accordance to British standards, Bureau of Indian Standards



DISCLAIMER: Our every effort has been made to ensure factual accuracy, the information presented subject to changes due to requirements in different sites, markets and/ or countries. All dimensions are in mm (Tolerance ± 5 MM). Jaquar reserves the right to make the necessary amendments at any time without prior notice.