



Shower Enclosures

Jaquar

experience bathing



SHOWER ENCLOSURES

Besides serving a functional purpose, a bathroom also is a private space which enhances your unique lifestyle. Presenting Jaquar Shower Enclosures specifically designed to cater to the modern lifestyle offering utility with a combination of aesthetic appeal.

Manufactured in accordance with stringent European norms, our wide range of framed, semi-framed & frameless shower enclosures are customized as per space requirement with accuracy and workmanship, ensuring maximum performance and durability while complementing your bathroom décor.

With wide range of designs, highest quality & safety standards, easy cleaning and maintenance features, Jaquar Shower Enclosures are the most preferred brand in modern bathrooms.

Jaquar
experience bathing





FRAMELESS SHOWER ENCLOSURES

IARA

Specifications

Wall-to-wall Shower Enclosure - 2 parts
Model No. 1820-W

Pivot Door
Height: 1950mm
Width: 700mm
Safety Glass: 8 mm
Colour of Hardware: Chrome

Front Panel
Height: 1950mm
Width: 500mm
Colour of Hardware: Chrome

Dimensions can be customized.

FRAMELESS SHOWER ENCLOSURES

IARA



Specifications

Wall-to-wall Shower Enclosure
Model No. 1820-G

Pivot Door

Height: 1950mm
Width: 700mm
Door Entry Width: 700mm
Safety Glass: 8 mm
Colour of Hardware: Chrome

Front Panel

Height: 1950mm
Width: 500mm
Colour of Hardware: Chrome

Dimensions can be customized.



Specifications

Wall-to-wall Shower Enclosure - 3 parts
Model No. 1830-G

Pivot Door

Height: 1950mm
Width: 1600mm
Door Entry Width: 700mm
Safety Glass: 8 mm
Colour of Hardware: Chrome

Dimensions can be customized.



Specifications

Wall-to-wall Shower Enclosure Only Door - 1 part
Model No. 1810-D

Side Panel

Height: 1950mm
Width: 800mm
Safety Glass: 8 mm
Colour of Hardware: Chrome

Dimensions can be customized.



Specifications

Corner Shower Enclosure - Door on Fixed Panel
Model No. 1840-G

Pivot Door

Height: 1950mm
Width: 1200mm
Door Entry Width: 700mm
Safety Glass: 8 mm
Colour of Hardware: Chrome

Side Panel

Height: 1950mm
Width: 1200mm
Safety Glass: 8 mm
Colour of Hardware: Chrome

Dimensions can be customized.



Specifications

Corner Shower Enclosure - Door on Wall Panel
Model No. 1840-W

Pivot Door

Height: 1950mm
Width: 1200mm
Door Entry Width: 700mm
Safety Glass: 8 mm
Colour of Hardware: Chrome

Side Panel

Height: 1950mm
Width: 1200mm
Safety Glass: 8 mm
Colour of Hardware: Chrome

Dimensions can be customized.



Specifications

Corner Shower Enclosure - Door on Fixed Panel
Model No. 1840-L

Pivot Door

Height: 1950mm
Width: 1200mm
Door Entry Width: 700mm
Safety Glass: 8 mm
Colour of Hardware: Chrome

Side Panel

Height: 1950mm
Width: 1200mm
Safety Glass: 8 mm
Colour of Hardware: Chrome

Dimensions can be customized.



Specifications

Corner Shower Enclosure - 3 parts Pentagon
Model No. 1840-P

Pivot Door

Height: 1950mm
Width: 1200mm
Door Entry Width: 700mm
Safety Glass: 8 mm
Colour of Hardware: Chrome

Side Panel

Height: 1950mm
Width: 1200mm
Safety Glass: 8 mm
Colour of Hardware: Chrome

Dimensions can be customized.



Specifications

3-part Shower Enclosure in U-shape
Model No. 1840-U

Pivot Door

Height: 1950mm
Width: 1200mm
Door Entry Width: 700mm
Safety Glass: 8 mm
Colour of Hardware: Chrome

Side Panel

Height: 1950mm
Width: 1200mm
Safety Glass: 8 mm
Colour of Hardware: Chrome

Dimensions can be customized.



Specifications

5-part Shower Enclosure
Model No. 1850-R

Pivot Door

Height: 1950mm
Width: 1200mm
Door Entry Width: 700mm
Safety Glass: 8 mm
Colour of Hardware: Chrome

Side Panel

Height: 1950mm
Width: 1200mm
Safety Glass: 8 mm
Colour of Hardware: Chrome

Dimensions can be customized.



Specifications

Free Walk-In Shower Enclosure
Model No. 1810-S

Pivot Door

Height: 1950mm
Width: 1000mm
Safety Glass: 8 mm
Colour of Hardware: Chrome

Dimensions can be customized.



Specifications

Free Walk-In Shower Enclosure - Tub Mounted
Model No. 1810-T

Pivot Door

Height: 1400mm
Width: 1000mm
Safety Glass: 8 mm
Colour of Hardware: Chrome

Note: Can be installed on left as well as right hand sides.

Dimensions can be customized.



Specifications

Urinal Partition
Model No. 1810-U, 1810-UC, 1810-US

Pivot Door

Height: 900mm
Width: 450mm
Frosted Safety Glass: 8 mm
Colour of Hardware: Chrome

Dimensions can be customized.





SEMI-FRAMED SHOWER ENCLOSURES

ESPIRA

Specifications

Free Walk-In Shower Enclosure
Model No. 0886

Height: 1950mm
Width: 1200mm
Standard Dimensions: 1170-1190mm
Safety Glass: 6 mm
Colour (Hinges/Profile): Chrome

Dimensions can be customized.

SEMI-FRAMED SHOWER ENCLOSURES

ESPIRA



Specifications

Corner Version Shower Enclosure with Side Panel
Model No. 0862/0863 + 0864

Pivot Door
Height: 1950mm
Width: 1200mm
Standard Dimensions: 1170-1190mm
Entry Width: 900mm
Safety Glass: 6 mm
Colour (Hinges/Profile): Chrome

Side Panel
Height: 1950mm
Width: 1200mm
Standard Dimensions: 1170-1190mm
Safety Glass: 6 mm
Colour (Hinges/Profile): Chrome

Dimensions can be customized.



Specifications

Pivot Door Shower Enclosure - 3 parts
(1400mm, 1600mm, 1800mm)
Model No. 0888/0889

Height: 1950mm
Width: 1400mm, 1600mm, 1800mm
Standard Dimensions: 1370-1410mm, 1570-1610mm, 1770-1810mm
Entry Width: 700mm, 700mm, 900mm
Safety Glass: 6 mm
Colour (Hinges/Profile): Chrome

Dimensions can be customized.



Specifications

Pivot Door Shower Enclosure - 2 parts
Model No. 0860/0861

Pivot Door
Height: 1950mm
Width: 900mm
Safety Glass: 6 mm
Colour (Hinges/Profile): Chrome

Front Panel
Height: 1950mm
Width: 300mm
Colour (Hinges/Profile): Chrome

Dimensions can be customized.



Specifications

Free Walk-In Shower Enclosure - Tub Mounted
Model No. 0886

Tub Mounted fixed glass
Height: 1400mm
Width: 1000mm
Standard Dimensions: 990-1000mm
Safety Glass: 6 mm
Colour (Hinges/Profile): Chrome

Dimensions can be customized.



Specifications

Round Corner Shower Enclosure - 4 parts
Model No. 0867

Pivot Door
Height: 1950mm
Width: 1200mm
Standard Dimensions: 1170-1190mm
Safety Glass: 6 mm
Colour (Hinges/Profile): Chrome

Dimensions can be customized.



Specifications

Pentagon Shower Enclosure - 4 parts
Model No. 0868

Pivot Door
Height: 1950mm
Width: 1200mm
Standard Dimensions: 1170-1190mm
Safety Glass: 6 mm
Colour (Hinges/Profile): Chrome

Dimensions can be customized.

ADENA



Specifications

Sliding Shower Enclosure for Niche Installation

2 Part (Left or Right Version)

Height: 2000mm

Width: 1200mm

Standard Dimensions: 1185-1200mm

Maximum Width: 2000mm

Safety Glass: 6 mm

Dimensions can be customized.

ENTRA



Specifications

Free Walk-In Shower Enclosure - 3 parts (with Side Panel)

1 Fixed Segment with 1 Curved Segment

Height: 2000mm

Width: 1620mm

Colour (Hinges/Profile): Chrome

Side Panel

Height: 2000mm

Width: 900mm

Standard Dimensions: 872-892mm

Safety Glass: 6 mm

Dimensions can be customized.

ENTRA



Specifications

Free Walk-In Shower Enclosure - 3 parts (without Side Panel)

1 Fixed Segment with 1 Curved Segment

Height: 2000mm

Safety Glass: 6 mm

Colour: Chrome

Dimensions can be customized.

ELANA



Specifications

Free Walk-In Shower Enclosure - 2 parts

Bath Screen 2-Part Enclosure

Height: 1400mm

Width: 1000mm

Standard Dimensions: 990-1000mm

Safety Glass: 6 mm

Colour: Chrome

IBIZA



Specifications

Quadrant Shower Enclosure

Height: 1850mm

Width: 1200mm

Standard Dimensions: 1180-1195mm

Radius: 500mm

Safety Glass: 3 mm

Colour: White/Chrome





FRAMED SHOWER ENCLOSURES

KRETANA

Specifications

Corner Entry Shower Enclosure - 2 parts
(1000x1000mm, 1200x1200mm, 1200x1000mm)

Height: 1850mm
Width: 1000mm, 1200mm
Standard Dimensions: 885-1000mm, 1104-1219mm, 885-1000mm
Safety Glass: 4 mm
Colour: Chrome

Features

Product Range:

- Wide range
- High quality
- Functionality at its best
- Modern & Contemporary designs

Quality:

• Standards

Jaquar Shower Enclosures are manufactured as per European norms & specifications using high quality material and are tested in accordance with EN14428:2004.

• Safety Glass: (Single Pane)

Benefits:

- Strength
 - Much stronger than same thickness of any other Glass.
 - Increased resistance to temperature change.
 - Increase resistance to bending fractures.
 - Long service life.
- Safety
 - Extremely strong & on breakage forms blunt-edged fragments which virtually eliminate any scope of injury.
 - No thermal breakage.
- Hygiene
 - Easy to clean

Note: Stress on the edges and contact with sharp objects should be avoided.

Warranty and Installation

- 5 years product warranty on hardware.
- 10 years availability of product components.
- Installation is done by trained glass experts.

Customer Service

- Jaquar provides you with expert assistance by visiting the site to analyse your bathroom and then recommends the right Shower Enclosure as per your Bathroom size.

The Advantage of Complete Fitments

- In keeping with our one-stop solution service, Jaquar provides the entire fitments of a Shower Enclosure in totality.

Features

Glass

- **Safety Glass:** 6 mm for Semi-Framed Range and 8 mm Glass for Frameless Range.
- **Tempering:** As per European Norms

Semi-Framed Range



- **Hinges with Rise and Wall Mechanism:** Rise and Fall Hinges come in our Semi-Framed Range. The mechanism of these hinges is such that the door opens in a slanting angle (not visible by the naked eye) that increases the gap between the floor and the door, which means that the door opens easy and closes water-tight. In addition, the impact on the PVC sealing is less, hence lifetime of the sealing is much longer.



- **Profiles:** The profiles are made of aluminium and first cut to size and then chrome plated. Due to this process, even the edges of these profiles have protection against corrosion in damp air and water.



- **Door Seal (at the bottom of the door):** This acts as a wiper to clean the floor thus ensuring that the dry area remains completely dry.



- **Plastic Components:** These are produced using an injection moulding process and are dyed. These include pivot bearings and roller holders, corner connections etc. ABS Plastic is used.



- **Magnetic Beading for Superior Sealing:** A magnetic strip is installed inside the beading, to give a longer life to the magnet. This is as per European norms.



- **Handles:** Ergonomically designed handles which give enclosures a sleek look.



Sliding Shower Enclosures (Semi-framed)

- **Ball Bearing Rollers**
 - Durable
 - Moving of door elements easy and silent. While in other products, these rollers are made from plastic, which makes moving door elements difficult and leads to breakage of the rollers quite often.

Frameless Range



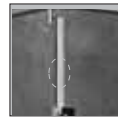
- **Hinges:** Brass Hinges with Chrome Plating.
 - **Auto Close Action:** The door closes automatically when left open till 30°.
 - **Wall to Glass Connectors:** Casted Brass with chrome plating.



- **Floor Clamps:** Jaquar provides floor clamps made up of casted brass with chrome plating to fix the shower enclosures from the floor.



- **Stabilizers:** Wall-to-wall stabilizer rods made up of stainless steel give extra stability to the glass enclosures, and protect them from vibrations.



- **Fasteners:** Rustproof stainless steel.



- **Towel Bars:** Mirror-finish Towel Bars made up of stainless steel.



- **Door-Wiper Gasket:** A rubber gasket is fixed at the bottom to make the shower enclosure leak-proof. Made of food grade plastics, the gasket is weather-proof, heat-proof, moisture-proof. Food grade material gives Gasket longer life which does not turn yellow.



- **Round Beading between the Wall and Fixed Panels (Both Panels):** We provide round beading between the wall and glass panel so as to cover the gap, thus making the enclosure completely watertight. This also eliminates the use of silicon which cracks within 6 to 8 months, and create spaces for water leakage.

- **Customisation:** Jaquar Shower Enclosures are customised, and can be created as per your requirements and the specifications of your bathroom size.

JAQUAR AND COMPANY PVT. LTD.

306, Udyog Vihar, Phase-II, Gurgaon-122016 (INDIA),
Ph.: 91-124-4746800 (30 Lines). Fax: 91-124-2346531/32. E-mail: enclosures@jaquar.com

ORIENTATION CENTRES:

AHMEDABAD: Ground Floor, Commerce House-4, B/S Reliance Petrol Pump, Near Anand Nagar Cross Roads, 100 Ft. Road, Prahlad Nagar, Satellite, Ahmedabad. E-mail: ahmedabad@jaquar.com

BANGALORE: No. 10, V.N. Street, Next to Hotel Harsha (Royal Orchids) Shivaji Nagar, Tasker Town, Bangalore-560051. Fax: 22862518. E-mail: bangalore@jaquar.com

BHOPAL: Shop No. 7, 3rd Floor, City Center, Above Lotus, 1 Press Complex, M. P. Nagar, Zone-1, Bhopal- 462011. E-mail: bhopal@jaquar.com

BHUBANESWAR: Plot No. 853/1671, 2nd Floor, Jharpada, Cuttack Road, Bhubaneswar-751006. E-mail: bhubaneswar@jaquar.com

CHANDIGARH: S.C.O. 215-16-17, 1st Floor, Sector 34-A, Chandigarh-160022. Fax: 2612755. E-mail: chandigarh@jaquar.com

CHENNAI: Unit No. 705, Capital Towers, 180, Kodambakkam High Road, Nungambakkam, Chennai-600034. Fax: 42144235. E-mail: chennai@jaquar.com

AREA REPRESENTATIVES:

AKOLA: 9359152880, 9850374959

AMRITSAR: 9915743687

AURANGABAD: 9167395443, 9819965565

BARODA: 9925036710

BILASPUR: 9893049275

CALICUT: 9446066887, 9446020890

CHANDIGARH: 9815355448

COIMBATORE: 9994189381

DEHRADUN: 9927075508

DHANBAD: 9693543860

DHARAMSHALA: 9815355448

FARIDABAD: 9810730071

GOA: 9881301009

GURGAON: 9810730071

GUWAHATI: 9706076189

GWALIOR: 9993097334

HISSAR: 9815355448

JABALPUR: 9993097334

JALANDHAR: 9915743687

JODHPUR: 9829109309

KANPUR: 9956298932

KARNAL: 9815355448

KOLHAPUR: 9881301009

NAGPUR: 9823122050, 9850374950

NASIK: 9167395443, 9819965565

NOIDA: 9810730071

PATNA: 9835036635, 9576031544

RAIPUR: 9893049275

RAJKOT: 9925036732

RANCHI: 9693543860

ROHTAK: 9815355448

SHIMLA: 9815355448

SOLAPUR: 9881301009

UDAIPUR: 9829109309

UP(W) & KUMAON: 9956298932

VARANASI: 9956298932

KATHMANDU: 9851043149

LUCKNOW: Ground Floor, Asha Bhawan, 27/II A, Gokhle Marg, Lucknow. E-mail: lucknow@jaquar.com

LUDHIANA: 2nd Floor, Lodhi Complex, Mall Road, Ludhiana. E-mail: ludhiana@jaquar.com

MUMBAI: 5th Floor, Chheda Arcade, A-1, Khira Nagar, S.V. Road, Santa Cruz West, Mumbai-400054. Fax: 26613917. E-mail: mumbai@jaquar.com

NEW DELHI: D-56, Defence Colony, New Delhi-110 024. Fax: 24636809. E-mail: delhincr@jaquar.com

PUNE: DSK Gandharva Heights, 5th Floor, Office No.501, Near Hotel Pride Executive, Ganeshkhind Road, Shivajinagar, Pune-411005. Fax: 25513921. E-mail: pune@jaquar.com

SILIGURI: Millennium Centre, Opp. LIC Building, 137/1, Sevoke Road, Siliguri-734001. Fax: 0353-777626. E-mail: siliguri@jaquar.com

SURAT: 23, Siddhi Shopping Centre, Nr. Agrasen Bhavan Char Rasta, City Light Road, Surat. E-mail: surat@jaquar.com



www.crescentgroup.in/Jaquar Glass Encloser/01-2012

Orientation Centre - 33002233*

Customer Care - 33004455*

* Add nearest Orientation Centre city code before the number.

Jaquar

experience bathing